

2015 GARVAN'S

PUBLICATIONS



INNOVATION



TEAMWORK

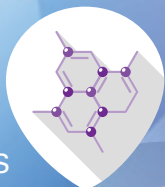
RESEARCH



EXCELLENCE



RESULTS



IDEAS



GARVAN
INSTITUTE
OF MEDICAL RESEARCH

PUBLICATIONS

2015

- A > Alarkawi D, Bliuc D, Nguyen TV, Eisman JA, Center JR. Contribution of Lumbar Spine BMD to Fracture Risk in Individuals With T-Score Discordance. *Journal of Bone and Mineral Research Epub* 2015/08/04. 10.1002/jbmr.2611
- Ali N, Jurczyk J, Shay G, Trimov Z, Alexandrov K, Munoz MA, et al. A highly sensitive prenylation assay reveals in vivo effects of bisphosphonate drug on the Rab prenylome of macrophages outside the skeleton. *Small GTPases* 2015; 6:202-211. 10.1080/21541248.2015.1085485
- Allen MD, Christie M, Jones P, Porebski BT, Roome B, Freund SM, et al. Solution structure of a soluble fragment derived from a membrane protein by shotgun proteolysis. *Protein Engineering, Design & Selection* 2015; 28:445-50. 10.1093/protein/gzv021
- Ashley D, Thomas D, Gore L, Carter R, Zalberg JR, Otmar R, Savulescu J. Accepting risk in the acceleration of drug development for rare cancers. *The Lancet. Oncology* 2015; 16:e190-4. 10.1016/S1470-2045(14)71153-2
- B > Baker EK, Taylor S, Gupte A, Chalk AM, Bhattacharya S, Green AC, et al. Wnt inhibitory factor 1 (WIF1) is a marker of osteoblastic differentiation stage and is not silenced by DNA methylation in osteosarcoma. *Bone* 2015; 73:223-32. 10.1016/j.bone.2014.12.063
- Ballingier ML, Mitchell G, Thomas DM. Surveillance recommendations for patients with germline TP53 mutations. *Current Opinion in Oncology* 2015; 27:332-7. 10.1097/CCO.0000000000000200
- Barry G, Guennewig B, Fung S, Kaczorowski D, Weickert CS. Long non-coding RNA expression during aging in the human subependymal zone. *Frontiers in Neurology* 2015; 6:45. 10.3389/fneur.2015.00045
- Bassett JH, van der Spek A, Logan JG, Gogakos A, Bagchi-Chakraborty J, Murphy E, et al. Thyrostimulin regulates osteoblastic bone formation during early skeletal development. *Endocrinology* 2015; 156:3098-113. 10.1210/en.2014-1943
- Beckers RK, Selinger CI, Vilain R, Madore J, Wilmott JS, Harvey K, et al. PDL1 expression in triple-negative breast cancer is associated with tumour-infiltrating lymphocytes and improved outcome. *Histopathology Epub* 2015/11/20. 10.1111/his.12904
- Belle L, Ali N, Lonic A, Li X, Paltridge JL, Roslan S, et al. The tyrosine phosphatase PTPN14 (Pez) inhibits metastasis by altering protein trafficking. *Sci Signal* 2015; 8:ra18. 10.1126/scisignal.2005547
- Bensellam M, Montgomery MK, Luzuriaga J, Chan JY, Laybutt DR. Inhibitor of differentiation proteins protect against oxidative stress by regulating the antioxidant-mitochondrial response in mouse beta cells. *Diabetologia* 2015; 58:758-70. 10.1007/s00125-015-3503-1
- Benthani F, Tran PN, Currey N, Ng I, Giry-Laterriere M, Carey L, et al. Proteogenomic analysis identifies a novel human SHANK3 isoform. *International Journal of Molecular Sciences* 2015; 16:11522-30. 10.3390/ijms160511522
- Beretov J, Wasinger VC, Millar EK, Schwartz P, Graham PH, Li Y. Proteomic analysis of urine to identify breast cancer biomarker candidates using a label-free LC-MS/MS approach. *PLoS One* 2015; 10:e0141876. 10.1371/journal.pone.0141876
- Biankin AV, Maitra A. Subtyping pancreatic cancer. *Cancer Cell* 2015; 28:411-3. 10.1016/j.ccell.2015.09.020
- Biankin AV, Piantadosi S, Hollingsworth SJ. Patient-centric trials for therapeutic development in precision oncology. *Nature* 2015; 526:361-70. 10.1038/nature15819
- Birnie V, Ho KK. Estrogen receptor antagonism uncovers gender-dimorphic suppression of whole body fat oxidation in humans: differential effects of tamoxifen on the GH and gonadal axes. *Frontiers in Endocrinology* 2015; 173:479-87. 10.1530/EJE-15-0426
- Birnie V, Khaw CH, Nelson AE, Meinhardt U, Ho KK. A critical evaluation of bioimpedance spectroscopy analysis in estimating body composition during GH treatment: comparison with bromide dilution and dual X-ray absorptiometry. *European Journal of Endocrinology* 2015; 172:21-8. 10.1530/EJE-14-0660
- Blackburn J, Roden DL, Ng R, Wu J, Bosman A, Epstein RJ. Damage-inducible intragenic demethylation of the human TP53 tumor suppressor gene is associated with transcription from an alternative intronic promoter. *Molecular Carcinogenesis Epub* 2015/12/18. 10.1002/mc.22441
- Blanchard E, Vickers CR, Samaras K. Not so sweet: autoimmune diabetes mellitus on triple therapy for chronic hepatitis C infection. *Diabetic Medicine* 2015; 32:e1-3. 10.1111/dme.12585
- Bliuc D, Alarkawi D, Nguyen TV, Eisman JA, Center JR. Risk of subsequent fractures and mortality in elderly women and men with fragility fractures with and without osteoporotic bone density: The Dubbo Osteoporosis Epidemiology Study. *Journal of Bone and Mineral Research* 2015; 30:637-46. 10.1002/jbmr.2393
- Bliuc D, Nguyen ND, Alarkawi D, Nguyen TV, Eisman JA, Center JR. Accelerated bone loss and increased post-fracture mortality in elderly women and men. *Osteoporosis International* 2015; 26:1331-9. 10.1007/s00198-014-3014-9
- Bone HG, Dempster DW, Eisman JA, Greenspan SL, McClung MR, Nakamura T, et al. Odanacatib for the treatment of postmenopausal osteoporosis: development history and design and participant characteristics of LOFT, the Long-Term Odanacatib Fracture Trial. *Osteoporosis International* 2015; 26:699-712. 10.1007/s00198-014-2944-6
- Bone HG, Dempster DW, Eisman JA, Greenspan SL, McClung MR, Nakamura T, et al. Erratum to: Odanacatib for the treatment of postmenopausal osteoporosis: development history and design and participant characteristics of LOFT, the Long-Term Odanacatib Fracture Trial. *Osteoporosis International* 2015; 26:2721. 10.1007/s00198-015-3274-z

- Boolell V, Alamgeer M, Watkins DN, Ganju V. The evolution of therapies in non-small cell lung cancer. *Cancers (Basel)* 2015; 7:1815-46. 10.3390/cancers7030864
- Bowtell DD, Bohm S, Ahmed AA, Aspuria PJ, Bast RC, Jr., Beral V, et al. Rethinking ovarian cancer II: reducing mortality from high-grade serous ovarian cancer. *Nature Reviews: Cancer* 2015; 15:668-79. 10.1038/nrc4019
- Bradley EA, Zhang L, Genders AJ, Richards SM, Rattigan S, Keske MA. Enhancement of insulin-mediated rat muscle glucose uptake and microvascular perfusion by 5-aminoimidazole-4-carboxamide-1-beta-D-ribofuranoside. *Cardiovascular Diabetology* 2015; 14:91. 10.1186/s12933-015-0251-y
- Brandon AE, Tid-Ang J, Wright LE, Stuart E, Suryana E, Bentley N, et al. Overexpression of SIRT1 in rat skeletal muscle does not alter glucose induced insulin resistance *PLoS One* 2015; 10:e0121959. 10.1371/journal.pone.0121959
- Brettingham-Moore KH, Taberlay PC, Holloway AF. Interplay between transcription factors and the epigenome: insight from the role of RUNX1 in leukemia. *Frontiers in Immunology* 2015; 6:499. 10.3389/fimmu.2015.00499
- Briggs JA, Wolvetang EJ, Mattick JS, Rinn JL, Barry G. Mechanisms of long non-coding RNAs in mammalian nervous system development, plasticity, disease, and evolution. *Neuron* 2015; 88:861-77. 10.1016/j.neuron.2015.09.045
- Brink R, Paus D, Bourne K, Hermes JR, Gardam S, Phan TG, Chan TD. The SWHEL system for high-resolution analysis of in vivo antigen-specific T-dependent B cell responses. *Methods in Molecular Biology* 2015; 1291:103-23. 10.1007/978-1-4939-2498-1_9
- Burgess A. Degrading claspin away with Cdh1 and cyclin A. *Cell Cycle* 2015; 14:171. 10.4161/15384101.2014.989949
- Butt D, Chan TD, Bourne K, Hermes JR, Nguyen A, Statham A, et al. FAS Inactivation Releases Unconventional Germinal Center B Cells that Escape Antigen Control and Drive IgE and Autoantibody Production. *Immunity* 2015; 42:890-902. 10.1016/j.immuni.2015.04.010
- Carlino MS, Fung C, Shahheydari H, Todd JR, Boyd SC, Irvine M, et al. Preexisting MEK1P124 mutations diminish response to BRAF inhibitors in metastatic melanoma patients. *Clinical Cancer Research* 2015; 21:98-105. 10.1158/1078-0432.CCR-14-0759
- Carlino MS, Kwan V, Miller DK, Saunders CA, Yip D, Nagrial AM, et al. New RAS-mutant pancreatic adenocarcinoma with combined BRAF and MEK inhibition for metastatic melanoma. *Journal of Clinical Oncology* 2015; 33:e52-6. 10.1200/JCO.2013.51.5783
- Chai TY, Tonks KT, Campbell LV. Long-term glycaemic control (HbA1c), not admission glucose, predicts hospital re-admission in diabetic patients. *Australasian Medical Journal* 2015; 8:189-99. 10.4066/AMJ.2015.2351
- Chambers ES, Viardot A, Psichas A, Morrison DJ, Murphy KG, Zac-Varghese SE, et al. Effects of targeted delivery of propionate to the human colon on appetite regulation, body weight maintenance and adiposity in overweight adults. *Gut* 2015; 64:1744-54. 10.1136/gutjnl-2014-307913
- Chan D, Clarke S, Gill AJ, Chantrill L, Samra J, Li BT, et al. Pathogenic PALB2 mutation in metastatic pancreatic adenocarcinoma and neuroendocrine tumour: A case report. *Molecular and Clinical Oncology* 2015; 3:817-819. 10.3892/mco.2015.533
- Chan EK, Hardie RA, Petersen DC, Beeson K, Bornman RM, Smith AB, Hayes VM. Revised timeline and distribution of the earliest diverged human maternal lineages in southern Africa. *PLoS One* 2015; 10:e0121223. 10.1371/journal.pone.0121223
- Chan JY, Luzuriaga J, Maxwell EL, West PK, Bensellam M, Laybutt DR. The balance between adaptive and apoptotic unfolded protein responses regulates beta-cell death under ER stress conditions through XBP1, CHOP and JNK. *Molecular and Cellular Endocrinology* 2015; 413:189-201. 10.1016/j.mce.2015.06.025
- Chang J, Ip M, Yang M, Wong B, Power T, Lin L, et al. The learning curve: inter-observer and intra-observer agreement of endoscopic confocal laser endomicroscopy in the assessment of mucosal barrier defects. *Gastrointestinal Endoscopy* Epub 2015/09/03. 10.1016/j.gie.2015.08.045
- Chantrill LA, Nagrial AM, Watson C, Johns AL, Martyn-Smith M, Simpson S, et al. Precision medicine for advanced pancreas cancer: the individualized molecular pancreatic cancer therapy (IMPACT) trial. *Clinical Cancer Research* 2015; 21:2029-37. 10.1158/1078-0432.CCR-15-0426
- Chaudhuri R, Sadrieh A, Hoffman NJ, Parker BL, Humphrey SJ, Stockli J, et al. PhosphOrtholog: a web-based tool for cross-species mapping of orthologous protein post-translational modifications. *BMC Genomics* 2015; 16:617. 10.1186/s12864-015-1820-x
- Chen DL, Liess C, Poljak A, Xu A, Zhang J, Thoma C, et al. Phenotypic characterization of insulin-resistant and insulin-sensitive obesity. *Journal of Clinical Endocrinology and Metabolism* 2015; 100:4082-91. 10.1210/jc.2015-2712
- Chen Z, Shen H, Sun C, Yin L, Tang F, Zheng P, et al. Myeloid cell TRAF3 promotes metabolic inflammation, insulin resistance, and hepatic steatosis in obesity. *American Journal of Physiology. Endocrinology and Metabolism* 2015; 308:E460-9. 10.1152/ajpendo.00470.2014
- Chevalier N, Macia L, Tan JK, Mason LJ, Robert R, Thorburn AN, et al. The role of T follicular helper cell molecules, and environmental influences, for autoantibody production and progression to inflammatory arthritis. *Arthritis Rheumatology* Epub 2015/10/26. 10.1002/art.39481
- Chin VT, Nagrial AM, Chou A, Biankin AV, Gill AJ, Timpson P, Pajic M. Rho-associated kinase signalling and the cancer microenvironment: novel biological implications and therapeutic opportunities. *Expert Reviews in Molecular Medicine* 2015; 17:e17. 10.1017/erm.2015.17
- Chou A, Fraser S, Toon CW, Clarkson A, Sioson L, Farzin M, et al. A detailed clinicopathologic study of ALK-translocated papillary thyroid carcinoma. *Am J Surg Pathol* 2015; 39:652-9. 10.1097/PAS.0000000000000368
- Christie M, Chang CW, Rona G, Smith KM, Stewart AG, Takeda AA, et al. Structural biology and regulation of protein import into the nucleus. *Journal of Molecular Biology* Epub 2015/10/30. 10.1016/j.jmb.2015.10.023
- Chu KY, O'Reilly L, Ramm G, Biden TJ. High-fat diet increases autophagic flux in pancreatic beta cells in vivo and ex vivo in mice. *Diabetologia* 2015; 58:2074-8. 10.1007/s00125-015-3665-x
- Clancy RM, Markham AJ, Reed JH, Blumenberg M, Halushka MK, Buyon JP. Targeting downstream transcription factors and epigenetic modifications following Toll-like receptor 7/8 ligation to forestall tissue injury in anti-Ro60 associated heart block. *Journal of Autoimmunity* Epub 2015/09/29. 10.1016/j.jaut.2015.09.003
- Clark IA, Vissel B. A neurologist's guide to TNF biology and to the principles behind the therapeutic removal of excess TNF in disease. *Neural Plasticity* 2015; 2015:358263. 10.1155/2015/358263
- Clark IA, Vissel B. Amyloid beta: one of three danger-associated molecules that are secondary inducers of the proinflammatory cytokines that mediate Alzheimer's disease. *British Journal of Pharmacology* 2015; 172:3714-27. 10.1111/bph.13181
- Clark MB, Mercer TR, Bussotti G, Leonardi T, Haynes KR, Crawford J, et al. Quantitative gene profiling of long noncoding RNAs with targeted RNA sequencing. *Nature Methods* 2015; 12:339-42. 10.1038/nmeth.3321
- Clarke J, Vatiliotis V, Verge CF, Holmes-Walker J, Campbell LV, Wilhelm K, Proudfoot J. A mobile phone and web-based intervention for improving mental well-being in young people with type 1 diabetes: design of a randomized controlled trial. *JMIR Research Protocols* 2015; 4:e50. 10.2196/resprot.4032
- Cochrane CR, Szczepny A, Watkins DN, Cain JE. Hedgehog signaling in the maintenance of cancer stem cells. *Cancers* 2015; 7:1554-85. 10.3390/cancers7030851
- Collier N, Groza T, Smedley D, Robinson PN, Oellrich A, Rebholz-Schuhmann D. PhenoMiner: from text to a database of phenotypes associated with OMIM diseases. *Database: The Journal of Biological Databases and Curation* 2015; 2015. 10.1093/database/bav104
- Consortium RN. RNAcentral: an international database of ncRNA sequences. *Nucleic Acids Res* 2015; 43:D123-9. 10.1093/nar/gku991
- Cooper WA, Tran T, Vilain RE, Madore J, Selinger CI, Kohonen-Corish M, et al. PD-L1 expression is a favorable prognostic factor in early stage non-small cell carcinoma. *Lung Cancer* 2015; 89:181-8. 10.1016/j.lungcan.2015.05.007
- Coughlan KA, Balon TW, Valentine RJ, Petrocelli R, Schultz V, Brandon A, et al. Nutrient excess and AMPK downregulation in incubated skeletal muscle and muscle of glucose infused rats. *PLoS One* 2015; 10:e0127388. 10.1371/journal.pone.0127388
- Croucher PI, Parker BS, Corcoran N, Rogers MJ. Bone turnover markers and prostate cancer: Not just a measure of bone disease? *Eur Urol* 2015; 68:51-2. 10.1016/j.eururo.2014.10.041
- Curtis J, Watkins A, Rosenbaum S, Teasdale S, Kalucy M, Samaras K, Ward PB. Evaluating an individualized lifestyle and life skills intervention to prevent antipsychotic-induced weight gain in first-episode psychosis. *Early Intervention Psychiatry* Epub 2015/02/26. 10.1111/eip.12230
- Dai K, He L, Khan SN, O'Dell S, McKee K, Tran K, et al. Rhesus macaque B-Cell responses to an HIV-1 trimer vaccine revealed by unbiased longitudinal repertoire analysis. *MBio* 2015; 6:e01375-15. 10.1128/mBio.01375-15
- De Sousa SM, Earls P, McCormack AI. Pituitary hyperplasia: case series and literature review of an under-recognised and heterogeneous condition. *Endocrinology, Diabetes & Metabolism Case Reports* 2015; 2015:150017. 10.1530/EDM-15-0017
- Debette S, Ibrahim Verbaas CA, Bressler J, Schuur M, Smith A, Bis JC, et al. Genome-wide studies of verbal declarative memory in nondemented older people: the cohorts for heart and aging research in genomic epidemiology consortium. *Biological Psychiatry* 2015; 77:749-63. 10.1016/j.biopsych.2014.08.027
- De Sousa SM, Maiti K, Smith R, McCormack AI. Corticotrophin-releasing hormone (CRH) expression in the dermoid component of ovarian teratomas. *Journal of the European Academy of Dermatology and Venereology: JEADV* Epub 2015/02/20. 10.1111/jdv.13035
- Du Q, Luu PL, Stirzaker C, Clark SJ. Methyl-CpG-binding domain proteins: readers of the epigenome. *Epigenomics* 2015; 7:1051-73. 10.2217/epi.15.39

- Du X, Zhang Y, Jo SR, Liu X, Qi Y, Osborne B, et al. Akt activation increases cellular cholesterol by promoting the proteasomal degradation of Niemann-Pick C1. *Biochemical Journal* 2015; 471:243-53. 10.1042/BJ20150602
- Duong JK, Kumar SS, Furlong TJ, Kirkpatrick CM, Graham GG, Greenfield JR, et al. The pharmacokinetics of metformin and concentrations of haemoglobin A1C and lactate in Indigenous and non-Indigenous Australians with type 2 diabetes mellitus. *Br J Clin Pharmacol* 2015; 79:617-23. 10.1111/bcp.12525
- E > Eeles DG, Hodge JM, Singh PP, Schuijers JA, Grills BL, Gillespie MT, et al. Osteoclast formation elicited by interleukin-33 stimulation is dependent upon the type of osteoclast progenitor. *Molecular and Cellular Endocrinology* 2015; 399:259-66. 10.1016/j.mce.2014.10.014
- Epstein RJ. A periodic table for cancer. *Future Oncology* 2015; 11:785-800. 10.2217/fon.14.315
- Esapa CT, Hannan FM, Babinsky VN, Potter P, Thomas GP, Croucher PI, et al. N-ethyl-N-nitrosourea (ENU) induced mutations within the klotho gene lead to ectopic calcification and reduced lifespan in mouse models. *PLoS One* 2015; 10:e0122650. 10.1371/journal.pone.0122650
- F > Fawcett NE, Lambert-Smith IA, Warraich ST, Blair IP, Saunders DN, Hatters DM, Yerbury JJ. Distinct partitioning of ALS associated TDP-43, FUS and SOD1 mutants into cellular inclusions. *Scientific Reports* 2015; 5:13416. 10.1038/srep13416
- Fazakerley DJ, Naghilo S, Chaudhuri R, Koumanov F, Burchfield JG, Thomas KC, et al. Proteomic analysis of GLUT4 storage vesicles reveals tumor suppressor candidate 5 (TUSC5) as a novel regulator of insulin action in adipocytes. *Journal of Biological Chemistry* 2015; 290:23528-42. 10.1074/jbc.M115.657361
- Feletto E, Bang A, Cole-Clark D, Chalasani V, Rasiah K, Smith DP. An examination of prostate cancer trends in Australia, England, Canada and USA: Is the Australian death rate too high? *World Journal of Urology* 2015; 33:1677-87. 10.1007/s00345-015-1514-7
- Field MA, Cho V, Cook MC, Enders A, Vinuesa CG, Whittle B, et al. Reducing the search space for causal genetic variants with VASP. *Bioinformatics* 2015; 31:2377-9. 10.1093/bioinformatics/btv135
- Fisher HL, Murphy TM, Arseneault L, Caspi A, Moffitt TE, Viana J, et al. Methylopic analysis of monozygotic twins discordant for childhood psychotic symptoms. *Epigenetics* 2015; 10:1014-1023. 10.1080/15592294.2015.1099797
- Foo SY, Zhang V, Lalwani A, Lynch JP, Zhuang A, Lam CE, et al. Regulatory T cells prevent inducible BALT formation by dampening neutrophilic inflammation. *Journal of Immunology* 2015; 194:4567-76. 10.4049/jimmunol.1400909
- G > Gallego-Ortega D, Ledger A, Roden DL, Law AM, Magenau A, Kikhtyak Z, et al. ELF5 drives lung metastasis in luminal breast cancer through recruitment of Gr1+ CD11b+ myeloid-derived suppressor cells. *PLoS Biology* 2015; 13:e1002330. 10.1371/journal.pbio.1002330
- Garcia-Melero A, Reverter M, Hoque M, Meneses-Salas E, Koese M, Conway JR, et al. Annexin A6 and late endosomal cholesterol modulates integrin recycling and cell migration. *Journal of Biological Chemistry* Epub 2015/11/17. 10.1074/jbc.M115.683557
- Gascoyne DM, Spearman H, Lyne L, Puliyadi R, Perez-Alcantara M, Coulton L, et al. The forkhead transcription factor FOXP2 is required for regulation of p21WAF1/CIP1 in 143B osteosarcoma cell growth arrest. *PLoS One* 2015; 10:e0128513. 10.1371/journal.pone.0128513
- Gee HE, Buffa FM, Harris AL, Toohey JM, Carroll SL, Cooper CL, et al. MicroRNA-related DNA repair/cell-cycle genes independently associated with relapse after radiation therapy for early breast cancer. *International Journal of Radiation Oncology, Biology, Physics* 2015; 93:1104-14. 10.1016/j.ijrobp.2015.08.046
- Girgis CM. Integrated therapies for osteoporosis and sarcopenia: from signaling pathways to clinical trials. *Calcified Tissue International* 2015; 96:243-55. 10.1007/s00223-015-9956-x
- Girgis CM, Baldock PA, Downes M. Vitamin D, muscle and bone: Integrating effects in development, aging and injury. *Molecular and Cellular Endocrinology* 2015; 410:3-10. 10.1016/j.mce.2015.03.020
- Girgis CM, Cha KM, Houweling PJ, Rao R, Mokbel N, Lin M, et al. Vitamin D receptor ablation and vitamin d deficiency result in reduced grip strength, altered muscle fibers, and increased myostatin in mice. *Calcified Tissue International* 2015; 97:602-10. 10.1007/s00223-015-0054-x
- Giry-Laterriere M, Pinho AV, Eling N, Chantrill L, Rooman I. Emerging drug target in pancreatic cancer: placing Sirtuin 1 on the canvas. *Current Cancer Drug Targets* 2015; 15:463-8.
- Gloss BS, Dinger ME. The specificity of long noncoding RNA expression. *Biochim Biophys Acta* Epub 2015/08/19. 10.1016/j.bbagr.2015.08.005
- Graham JS, Jamieson NB, Rulach R, Grimmond SM, Chang DK, Biankin AV. Pancreatic cancer genomics: where can the science take us? *Clin Genet* 2015; 88:213-9. 10.1111/cge.12536
- Gray PE, O'Brien TA, Wagle M, Tangye SG, Palendira U, Roscioli T, et al. Cerebral vasculitis in X-linked lymphoproliferative disease cured by matched unrelated cord blood transplant. *Journal of Clinical Immunology* 2015; 35:604-9. 10.1007/s10875-015-0194-9
- Green AC, Poulton IJ, Vrahnas C, Hausler KD, Walkley CR, Wu JY, et al. RARGamma is a negative regulator of osteoclastogenesis. *Journal of Steroid Biochemistry and Molecular Biology* 2015; 150:46-53. 10.1016/j.jsbmb.2015.03.005
- Grimont A, Pinho AV, Cowley MJ, Augereau C, Mawson A, Giry-Laterriere M, et al. SOX9 regulates ERBB signalling in pancreatic cancer development. *Gut* 2015; 64:1790-9. 10.1136/gutjnl-2014-307075
- Grizzi F, Borroni EM, Vacchini A, Qehajaj D, Liguori M, Stifter S, et al. Pituitary adenoma and the chemokine network: a systemic view. *Frontiers in Endocrinology* 2015; 6:141. 10.3389/fendo.2015.00141
- Groza T, Kohler S, Doelken S, Collier N, Oelrich A, Smedley D, et al. Automatic concept recognition using the human phenotype ontology reference and test suite corpora. *Database: The Journal of Biological Databases and Curation* 2015; 2015:pii: bav005. 10.1093/database/bav005
- Groza T, Kohler S, Moldenhauer D, Vasilevsky N, Baynam G, Zemojtel T, et al. The human phenotype ontology: semantic unification of common and rare disease. *American Journal of Human Genetics* 2015; 97:111-24. 10.1016/j.ajhg.2015.05.020
- Gunton JE, Girgis CM, Baldock PA, Lips P. Bone muscle interactions and vitamin D. *Bone* 2015; 80:89-94. 10.1016/j.bone.2015.02.029
- Guo J, Wang X, Henstridge DC, Richardson JJ, Cui J, Sharma A, et al. Nanoporous metal-phenolic particles as ultrasound imaging probes for hydrogen peroxide. *Advanced Healthcare Materials* Epub 2015/09/01. 10.1002/adhm.201500528
- Gupta R, O'Connell R, Haynes AM, Stricker PD, Barrett W, Turner JJ, et al. Extraprostatic extension (EPE) of prostatic carcinoma: is its proximity to the surgical margin or Gleason score important? *BJU Int* 2015; 116:343-50. 10.1111/bju.12911
- H > Ha DT, Dang TQ, Tran NV, Vo NY, Nguyen ND, Nguyen TV. Prognostic performance of the Rapid Emergency Medicine Score (REMS) and Worthing Physiological Scoring system (WPS) in emergency department. *International Journal of Emergency Medicine* 2015; 8:18. 10.1186/s12245-015-0066-3
- Haczeyni F, Barn V, Mridha AR, Yeh MM, Estevez E, Febbraio MA, et al. Exercise improves adipose function and inflammation and ameliorates fatty liver disease in obese diabetic mice. *Obesity* 2015; 23:1845-55. 10.1002/oby.21170
- Hampton HR, Bailey J, Tomura M, Brink R, Chtanova T. Microbe-dependent lymphatic migration of neutrophils modulates lymphocyte proliferation in lymph nodes. *Nature Communications* 2015; 6:7139. 10.1038/ncomms8139
- Hassanzadeh H, Groza T, Nguyen A, Hunter J. A supervised approach to quantifying sentence similarity: with application to evidence based medicine. *PLoS One* 2015; 10:e0129392. 10.1371/journal.pone.0129392
- Haysom L, Samaras K, Stapylton C, Wines J. Statin-associated myotoxicity in an incarcerated Indigenous youth - the perfect storm. *Medical Journal of Australia* 2015; 202:381-2.
- Ho J, Bailey M, Zaunders J, Mrad N, Sacks R, Sewell W, Harvey RJ. Group 2 innate lymphoid cells (ILC2s) are increased in chronic rhinosinusitis with nasal polyps or eosinophilia. *Clinical and Experimental Allergy* 2015; 45:394-403. 10.1111/cea.12462
- Ho J, Bailey M, Zaunders J, Mrad N, Sacks R, Sewell W, Harvey RJ. Cellular comparison of sinus mucosa vs polyp tissue from a single sinus cavity in chronic rhinosinusitis. *International Forum of Allergy and Rhinology* 2015; 5:14-27. 10.1002/alr.21417
- Ho-Pham LT, Lai TQ, Mai LD, Doan MC, Pham HN, Nguyen TV. Prevalence and pattern of radiographic intervertebral disc degeneration in Vietnamese: a population-based study. *Calcified Tissue International* 2015; 96:510-7. 10.1007/s00223-015-9986-4
- Ho-Pham LT, Lai TQ, Nguyen MT, Nguyen TV. Relationship between body mass index and percent body fat in Vietnamese: implications for the diagnosis of obesity. *PLoS One* 2015; 10:e0127198. 10.1371/journal.pone.0127198
- Ho-Pham LT, Lai TQ, Mai LD, Doan MC, Nguyen TV. Body Composition in Individuals with Asymptomatic Osteoarthritis of the Knee. *Calcified Tissue International* Epub 2015/11/21. 10.1007/s00223-015-0080-8
- Ho-Pham LT, Nguyen SC, Tran B, Nguyen TV. Contributions of Caucasian-associated bone mass loci to the variation in bone mineral density in Vietnamese population. *Bone* 2015; 76:18-22. 10.1016/j.bone.2015.03.003
- Hocking SL, Stewart RL, Brandon AE, Suryana E, Stuart E, Baldwin EM, et al. Subcutaneous fat transplantation alleviates diet-induced glucose intolerance and inflammation in mice. *Diabetologia* 2015; 58:1587-600. 10.1007/s00125-015-3583-y
- Hoffman NJ, Parker BL, Chaudhuri R, Fisher-Wellman KH, Kleinert M, Humphrey SJ, et al. Global phosphoproteomic analysis of human skeletal muscle reveals a network of exercise-regulated kinases and AMPK substrates. *Cell Metabolism* 2015; 22:922-35. 10.1016/j.cmet.2015.09.001
- Hoque M, Rentero C, Conway JR, Murray RZ, Timpson P, Enrich C, Grewal T. The cross-talk of LDL-cholesterol with cell motility: Insights from the Niemann Pick Type C1 mutation and altered integrin trafficking. *Cell Adhesion & Migration* 2015; 9:384-91. 10.1080/19336918.2015.1019996

- Houweling P, Kulkarni RN, Baldock PA. Neuronal control of bone and muscle. *Bone* 2015; 80:95-100. 10.1016/j.bone.2015.05.006
- Huang KT, Mikeska T, Li J, Takano EA, Millar EK, Graham PH, et al. Assessment of DNA methylation profiling and copy number variation as indications of clonal relationship in ipsilateral and contralateral breast cancers to distinguish recurrent breast cancer from a second primary tumour. *BMC Cancer* 2015; 15:669. 10.1186/s12885-015-1676-0
- Humphris J, Chang DK, Biankin AV. Inherited susceptibility to pancreatic cancer in the era of next-generation sequencing. *Gastroenterology* 2015; 148:496-8. 10.1053/j.gastro.2015.01.009
- Huo CW, Chew G, Hill P, Huang D, Ingman W, Hodson L, et al. High mammographic density is associated with an increase in stromal collagen and immune cells within the mammary epithelium. *Breast Cancer Research : BCR* 2015; 17:79. 10.1186/s13058-015-0592-1
- I } Ibrahim-Verbaas CA, Bressler J, Dobbie S, Schuur M, Smith AV, Bis JC, et al. GWAS for executive function and processing speed suggests involvement of the CADM2 gene. *Molecular Psychiatry* Epub 2015/04/14. 10.1038/mp.2015.37
- J } Jacovetti C, Jimenez V, Ayuso E, Laybutt R, Peyot ML, Prentki M, et al. Contribution of intronic miR-338-3p and its hosting gene AATK to compensatory beta-cell mass expansion. *Molecular Endocrinology* 2015; 29:693-702. 10.1210/me.2014-1299
- Jamieson NB, Chang DK, Biankin AV. Cancer genetics and Implications for clinical management. *The Surgical Clinics of North America* 2015; 95:919-34. 10.1016/j.suc.2015.05.003
- Jenkins AB, Campbell LV. Variation in genetic susceptibility drives increasing dispersion of population BMI. *The American Journal of Clinical Nutrition* 2015; 101:1308. 10.3945/ajcn.115.108092
- Junankar S, Baker LA, Roden DL, Nair R, Elsworth B, Gallego-Ortega D, et al. ID4 controls mammary stem cells and marks breast cancers with a stem cell-like phenotype. *Nature Communications* 2015; 6:6548. 10.1038/ncomms7548
- Junankar S, Shay G, Juczyluk J, Ali N, Down J, Pocock N, et al. Real-time intravital imaging establishes tumor-associated macrophages as the extraskelatal target of bisphosphonate action in cancer. *Cancer Discov* 2015; 5:35-42. 10.1158/2159-8290.CD-14-0621
- Jung S, Schickel JN, Kern A, Knapp AM, Eftekhari P, Da Silva S, et al. Chronic bacterial infection activates autoreactive B cells and induces isotype switching and autoantigen-driven mutations. *European Journal of Immunology* Epub 2015/10/17. 10.1002/eji.201545810
- K } Kaufman KL, Mactier S, Armstrong NJ, Mallawaarachy D, Byrne SN, Haydu LE, et al. Surface antigen profiles of leukocytes and melanoma cells in lymph node metastases are associated with survival in AJCC stage III melanoma patients. *Clinical and Experimental Metastasis* Epub 2015/01/17. 10.1007/s10585-014-9636-7
- Kaur S, Lotsari JE, Al-Sohaily S, Warusavitarne J, Kohonen-Corish MR, Peltomaki P. Identification of subgroup-specific miRNA patterns by epigenetic profiling of sporadic and Lynch syndrome-associated colorectal and endometrial carcinoma. *Clinical Epigenetics* 2015; 7:20. 10.1186/s13148-015-0059-3
- Kayagaki N, Stowe IB, Lee BL, O'Rourke K, Anderson K, Warming S, et al. Caspase-11 cleaves gasdermin D for non-canonical inflammasome signalling. *Nature* 2015; 526:666-71. 10.1038/nature15541
- Kee AJ, Yang L, Lucas CA, Greenberg MJ, Martel N, Leong GM, et al. An actin filament population defined by the tropomyosin Tpm3.1 regulates glucose uptake. *Traffic* 2015; 16:691-711. 10.1111/tra.12282
- Ketteler M, Elder GJ, Evenepoel P, Ix JH, Jamal SA, Lafage-Proust MH, et al. Revisiting KDIGO clinical practice guideline on chronic kidney disease-mineral and bone disorder: a commentary from a Kidney Disease: Improving Global Outcomes controversies conference. *Kidney International* 2015; 87:502-28. 10.1038/ki.2014.425
- Khandekar N, Berning BA, Sainsbury A, Lin S. The role of pancreatic polypeptide in the regulation of energy homeostasis. *Molecular and Cellular Endocrinology* 2015; 418P1:33-41. 10.1016/j.mce.2015.06.028
- Kitwitee P, Limwattananon S, Limwattananon C, Waleekachonlert O, Ratanachotpanich T, Pimphilai M, et al. Metformin for the treatment of gestational diabetes: An updated meta-analysis. *Diabetes Research and Clinical Practice* 2015; 109:521-32. 10.1016/j.diabres.2015.05.017
- Kon E, Filardo G, Shani J, Altschuler N, Levy A, Zaslav K, et al. Osteochondral regeneration with a novel aragonite-hyaluronate biphasic scaffold: up to 12-month follow-up study in a goat model. *Journal of Orthopaedic Surgery and Research* 2015; 10:81. 10.1186/s13018-015-0211-y
- Korbie D, Lin E, Wall D, Nair SS, Storzaker C, Clark SJ, Trau M. Multiplex bisulfite PCR resequencing of clinical FFPE DNA. *Clinical Epigenetics* 2015; 7:28. 10.1186/s13148-015-0067-3
- Kozusko K, Tsang VH, Bottomley W, Cho YH, Gandotra S, Mimmack M, et al. Clinical and molecular characterization of a novel PLIN1 frameshift mutation identified in patients with familial partial lipodystrophy. *Diabetes* 2015; 64:299-310. 10.2337/db14-0104
- Kreins AY, Ciancanelli MJ, Okada S, Kong XF, Ramirez-Alejo N, Kilic SS, et al. Human TYK2 deficiency: Mycobacterial and viral infections without hyper-IgE syndrome. *The Journal of Experimental Medicine* 2015; 212:1641-62. 10.1084/jem.20140280
- Kumar KR. Mutations in hippocalcin and autosomal recessive dystonia: a role for perturbed calcium signaling? *Movement Disorders* 2015; 30:911. 10.1002/mds.26261
- Kwak CW, Son YM, Gu MJ, Kim G, Lee IK, Kye YC, et al. A bacterial metabolite, compound K, induces programmed necrosis in MCF-7 cells via GSK3beta. *Journal of Microbiology and Biotechnology* 2015; 25:1170-6. 10.4014/jmb.1505.05057
- L } Lagisz M, Blair H, Kenyon P, Uller T, Raubenheimer D, Nakagawa S. Little appetite for obesity: meta-analysis of the effects of maternal obesogenic diets on offspring food intake and body mass in rodents. *Int J Obes (Lond)* 2015; 39:1669-78. 10.1038/ijo.2015.160
- Lam M, Hull L, Imrie A, Snidvongs K, Chin D, Pratt E, et al. Interleukin-25 and interleukin-33 as mediators of eosinophilic inflammation in chronic rhinosinusitis. *American Journal of Rhinology & Allergy* 2015; 29:175-81. 10.2500/ajra.2015.29.4176
- Lam T, Chan MM, Sweeting AN, De Sousa SM, Clements A, Carlino MS, et al. Ipilimumab-induced hypophysitis in melanoma patients: an Australian case series. *Internal Medicine Journal* 2015; 45:1066-73. 10.1111/imj.12819
- Lawson MA, McDonald MM, Kovacic N, Hua Khoo W, Terry RL, Down J, et al. Osteoclasts control reactivation of dormant myeloma cells by remodelling the endosteal niche. *Nature Communications* 2015; 6:8983. 10.1038/ncomms9983
- Leach DA, Need EF, Toivanen R, Trotta AP, Palenthorpe HM, Tamblyn DJ, et al. Stromal androgen receptor regulates the composition of the microenvironment to influence prostate cancer outcome. *Oncotarget* 2015; 6:16135-50.
- Lee BY, Timpson P, Horvath LG, Daly RJ. FAK signaling in human cancer as a target for therapeutics. *Pharmacol Ther* 2015; 146:132-49. 10.1016/j.pharmthera.2014.10.001
- Lee JA, Yerbury JJ, Farrarwell N, Shearer RF, Constantinescu P, Hatters DM, et al. SerpinB2 (PAI-2) modulates proteostasis via binding misfolded proteins and promotion of cytoprotective inclusion formation. *PLoS One* 2015; 10:e0130136. 10.1371/journal.pone.0130136
- Lee NJ, Nguyen AD, Enriquez RF, Luzuriaga J, Bensellam M, Laybutt R, et al. NPY signalling in early osteoblasts controls glucose homeostasis. *Molecular Metabolism* 2015; 4:164-74. 10.1016/j.molmet.2014.12.010
- Lee P, Birzniece V, Umpleby AM, Poljak A, Ho KK. Formoterol, a highly beta2-selective agonist, induces gender-dimorphic whole body leucine metabolism in humans. *Metabolism* 2015; 64:506-12. 10.1016/j.metabol.2014.12.005
- Lee P, Greenfield JR. 'Hyperaldosteronaemic or normocalcaemic' hyperparathyroidism? *Clin Endocrinol (Oxf)* 2015; 83:748-9. 10.1111/cen.12771
- Lee P, Greenfield JR. Non-pharmacological and pharmacological strategies of brown adipose tissue recruitment in humans. *Molecular and Cellular Endocrinology* 2015; 418 Pt 2:184-90. 10.1016/j.mce.2015.05.025
- Lee P, Greenfield JR. What is the optimal bone-preserving strategy for patients with Addison's disease? *Clin Endocrinol (Oxf)* 2015; 83:157-61. 10.1111/cen.12730
- Lee P, Swarbrick MM, Greenfield JR. The sum of all browning in FGF21 therapeutics. *Cell Metabolism* 2015; 21:795-6. 10.1016/j.cmet.2015.05.018
- Lefebvre J, Clarkson M, Massa F, Bradford ST, Charlet A, Buske F, et al. Alternatively spliced isoforms of WT1 control podocyte-specific gene expression. *Kidney International* 2015; 88:321-31. 10.1038/ki.2015.140
- Lim CB, Prele CM, Baltic S, Arthur PG, Creaney J, Watkins DN, et al. Mitochondria-derived reactive oxygen species drive GANT61-induced mesothelioma cell apoptosis. *Oncotarget* 2015; 6:1519-30.
- Lim CP, Fisher OM, Falkenback D, Boyd D, Hayward CS, Keogh A, et al. Bariatric Surgery Provides a "Bridge to Transplant" for Morbidly Obese Patients with Advanced Heart Failure and May Obviate the Need for Transplantation. *Obesity Surgery* Epub 2015/07/12. 10.1007/s11695-015-1789-1
- Lim SH, Chua W, Henderson C, Ng W, Shin JS, Chantrill L, et al. Predictive and prognostic biomarkers for neoadjuvant chemoradiotherapy in locally advanced rectal cancer. *Critical Reviews in Oncology/Hematology* 2015; 96:67-80. 10.1016/j.critrevonc.2015.05.003
- Lim SL, Qu ZP, Kortschak RD, Lawrence DM, Geoghegan J, Hempfling AL, et al. HENMT1 and piRNA stability are required for adult male germ cell transposon repression and to define the spermatogenic program in the mouse. *PLoS Genetics* 2015; 11:e1005620. 10.1371/journal.pgen.1005620
- Lim Y, Gondek L, Li L, Wang Q, Ma H, Chang E, et al. Integration of Hedgehog and mutant FLT3 signaling in myeloid leukemia. *Science Translational Medicine* 2015; 7:291ra96. 10.1126/scitranslmed.aaa5731

- Liu Y, DeBoer K, de Kretser DM, O'Donnell L, O'Connor AE, Merriner DJ, et al. LRUK-1 is required for basal body and manchette function during spermatogenesis and male fertility. *Osteoporosis International* 2015; 11:e1005090. 10.1371/journal.pgen.1005090
- Locke WJ, Zotenko E, Storzaker C, Robinson MD, Hinshelwood RA, Stone A, et al. Coordinated epigenetic remodelling of transcriptional networks occurs during early breast carcinogenesis. *Clinical Epigenetics* 2015; 7:52. 10.1186/s13148-015-0086-0
- Loh K, Herzog H, Shi YC. Regulation of energy homeostasis by the NPY system. *Trends in Endocrinology and Metabolism* 2015; 26:125-35. 10.1016/j.tem.2015.01.003
- Loh SF, Cooper C, Selinger CI, Barnes EH, Chan C, Carmalt H, et al. Cell cycle marker expression in benign and malignant intraductal papillary lesions of the breast. *J Clin Pathol* 2015; 68:187-91. 10.1136/jclinpath-2014-202331
- Londin E, Loher P, Telonis AG, Quann K, Clark P, Jing Y, et al. Analysis of 13 cell types reveals evidence for the expression of numerous novel primate- and tissue-specific microRNAs. *Proceedings of the National Academy of Sciences of the United States of America* 2015; 112:E1106-15. 10.1073/pnas.1420955112
- Luk PP, Yu B, Ng CC, Mercorella B, Selinger C, Lum T, et al. BRAF mutations in non-small cell lung cancer. *Translational Lung Cancer Research* 2015; 4:142-8. 10.3978/j.issn.2218-6751.2014.08.08
- Ma CS, Wong N, Rao G, Avery DT, Torpy J, Hambridge T, et al. Monogenic mutations differentially affect the quantity and quality of T follicular helper cells in patients with human primary immunodeficiencies. *Journal of Allergy and Clinical Immunology* 2015; 136:993-1006 e1. 10.1016/j.jaci.2015.05.036
- Ma DK, Stolte C, Kaur S, Bain M, O'Donoghue SI. Visual analytics of signalling pathways using time profiles. *Advances in Experimental Medicine and Biology* 2015; 823:3-22. 10.1007/978-3-319-10984-8_1
- Ma DK, Stolte C, Krycer JR, James DE, O'Donoghue SI. SnapShot: insulin/IGF1 signaling. *Cell* 2015; 161:948-948 e1. 10.1016/j.cell.2015.04.041
- Ma X, Lee P, Chisholm DJ, James DE. Control of adipocyte differentiation in different fat depots; implications for pathophysiology or therapy. *Frontiers in Endocrinology* 2015; 6:1. 10.3389/fendo.2015.00001
- Maag JL, Panja D, Sporild I, Patil S, Kaczorowski DC, Bramham CR, et al. Dynamic expression of long noncoding RNAs and repeat elements in synaptic plasticity. *Frontiers in Neuroscience* 2015; 9:351. 10.3389/fnins.2015.00351
- Mahon KL, Lin HM, Castillo L, Lee BY, Lee-Ng M, Chatfield MD, et al. Cytokine profiling of docetaxel-resistant castration-resistant prostate cancer. *British Journal of Cancer* 2015; 112:1340-8. 10.1038/bjc.2015.74
- Malle EK, Zammit NW, Walters SN, Koay YC, Wu J, Tan BM, et al. Nuclear factor kappaB-inducing kinase activation as a mechanism of pancreatic beta cell failure in obesity. *The Journal of Experimental Medicine* 2015; 212:1239-54. 10.1084/jem.20150218
- Martin JH, Phillips E, Thomas D, Somogyi AA. Adding the 'medicines' back into personalized medicine to improve cancer treatment outcomes. *Br J Clin Pharmacol* 2015; 80:929-31. 10.1111/bcp.12690
- Martinez P, Sundling C, O'Dell S, Mascola JR, Wyatt RT, Karlsson Hedestam GB. Primate immune responses to HIV-1 Env formulated in the saponin-based adjuvant AbISCO-100 in the presence or absence of TLR9 co-stimulation. *Scientific Reports* 2015; 5:8925. 10.1038/srep08925
- Mattick JS, Rinn JL. Discovery and annotation of long noncoding RNAs. *Nature Structural & Molecular Biology* 2015; 22:5-7. 10.1038/nsmb.2942
- McBride KA, Hollowell N, Tattersall MH, Kirk J, Ballinger ML, Thomas DM, et al. Timing and context: important considerations in the return of genetic results to research participants. *Journal of Community Genetics Epub* 2015/05/226. 10.1007/s12687-015-0231-7
- McBride KA, Young MA, Schlub TE, Kirk J, Tattersall MHN, Ballinger M, et al. The psychosocial effects of a whole body MRI screening trial in sarcoma patients with a germline Tp53 mutation. *Asia-Pacific Journal of Clinical Oncology* 2015; 11:178-178.
- McCabe MJ, Foo CF, Dinger ME, Smooker PM, Stanton PG. Claudin-11 and occludin are major contributors to Sertoli cell tight junction function. *Asian Journal of Andrology epub* 2015/11/10. 10.4103/1008-682X.163189
- McCabe MJ, Hu Y, Gregory LC, Gaston-Massuet C, Alatzoglou KS, Saldanha JW, et al. Novel application of luciferase assay for the in vitro functional assessment of KAL1 variants in three females with septo-optic dysplasia (SOD). *Molecular and Cellular Endocrinology* 2015; 417:63-72. 10.1016/j.mce.2015.09.010
- McCarroll JA, Sharbeen G, Liu J, Youkhana J, Goldstein D, McCarthy N, et al. betall-tubulin: a novel mediator of chemoresistance and metastases in pancreatic cancer. *Oncotarget* 2015; 6:2235-49.
- McCloy RA, Parker BL, Rogers S, Chaudhuri R, Gayevskiy V, Hoffman NJ, et al. Global phosphoproteomic mapping of early mitotic exit in human cells identifies novel substrate dephosphorylation motifs. *Molecular & Cellular Proteomics* 2015; 14:2194-212. 10.1074/mcp.M114.046938
- McGuire B, Fiorillo B, Ryugo DK, Lauer AM. Auditory nerve synapses persist in ventral cochlear nucleus long after loss of acoustic input in mice with early-onset progressive hearing loss. *Brain Research* 2015; 1605:22-30. 10.1016/j.brainres.2015.02.012
- McGuire HM, Vogelzang A, Warren J, Loetsch C, Natividad KD, Chan TD, et al. IL-21 and IL-4 collaborate to shape T-dependent antibody responses. *Journal of Immunology* 2015; 195:5123-35. 10.4049/jimmunol.1501463
- Meikle PJ, Mundra PA, Wong G, Rahman K, Huynh K, Barlow CK, et al. Circulating lipids are associated with alcoholic liver cirrhosis and represent potential biomarkers for risk assessment. *PLoS One* 2015; 10:e0130346. 10.1371/journal.pone.0130346
- Mercer TR, Clark MB, Andersen SB, Brunck ME, Haerty W, Crawford J, et al. Genome-wide discovery of human splicing branchpoints. *Genome Research* 2015; 25:290-303. 10.1101/gr.182899.114
- Miller BW, Morton JP, Pinese M, Saturno G, Jamieson NB, McGhee E, et al. Targeting the LOX/hypoxia axis reverses many of the features that make pancreatic cancer deadly: inhibition of LOX abrogates metastasis and enhances drug efficacy. *EMBO Molecular Medicine* 2015; 7:1063-76. 10.15252/emmm.201404827
- Mills JD, Kavanagh T, Kim WS, Chen BJ, Waters PD, Halliday GM, Janitz M. High expression of long intervening non-coding RNA OLMALINC in the human cortical white matter is associated with regulation of oligodendrocyte maturation. *Molecular Brain* 2015; 8:2. 10.1186/s13041-014-0091-9
- Miosge LA, Field MA, Sontani Y, Cho V, Johnson S, Palkova A, et al. Comparison of predicted and actual consequences of missense mutations. *Proceedings of the National Academy of Sciences of the United States of America* 2015; 112:E5189-98. 10.1073/pnas.1511585112
- Mirabello L, Koster R, Moriarity BS, Spector LG, Meltzer PS, Gary J, et al. A genome-wide scan identifies variants in NFIB associated with metastasis in patients with osteosarcoma. *Cancer Discov* 2015; 5:920-31. 10.1158/2159-8290.CD-15-0125
- Mladenova DN, Dahlstrom JE, Tran PN, Benthani F, Bean EG, Ng I, et al. HIF1alpha deficiency reduces inflammation in a mouse model of proximal colon cancer. *Disease Models & Mechanisms* 2015; 8:1093-103. 10.1242/dmm.019000
- Moni MA, Lio P. How to build personalized multi-omics comorbidity profiles. *Frontiers in Cell and Developmental Biology* 2015; 3:28. 10.3389/fcell.2015.00028
- Moni MA, Xu H, Lio P. CytoCom: a Cytoscape app to visualize, query and analyse disease comorbidity networks. *Bioinformatics* 2015; 31:969-71. 10.1093/bioinformatics/btu731
- Moran-Jones K, Brown LM, Samimi G. INC280, an orally available small molecule inhibitor of c-MET, reduces migration and adhesion in ovarian cancer cell models. *Scientific Reports* 2015; 5:11749. 10.1038/srep11749
- Moran-Jones K, Gloss BS, Murali R, Chang DK, Colvin EK, Jones MD, et al. Connective tissue growth factor as a novel therapeutic target in high grade serous ovarian cancer. *Oncotarget* 2015; 6:44551-62. 10.18632/oncotarget.6082
- Morigi JJ, Stricker PD, van Leeuwen PJ, Tang R, Ho B, Nguyen Q, et al. Prospective comparison of 18F-Fluoromethylcholine versus 68Ga-PSMA PET/CT in prostate cancer patients who have rising PSA after curative treatment and are being considered for targeted therapy. *Journal of Nuclear Medicine* 2015; 56:1185-90. 10.2967/jnumed.115.160382
- Morse A, Yu NY, Peacock L, Mikulec K, Kramer I, Kneissel M, et al. Endochondral fracture healing with external fixation in the Sost knockout mouse results in earlier fibrocartilage callus removal and increased bone volume fraction and strength. *Bone* 2015; 71:155-63. 10.1016/j.bone.2014.10.018
- Mungall CJ, Washington NL, Nguyen-Xuan J, Condit C, Smedley D, Kohler S, et al. Use of model organism and disease databases to support matchmaking for human disease gene discovery. *Human Mutation* 2015; 36:979-84. 10.1002/humu.22857
- Muniak M, Connelly CJ, Sutaker K, Milinkeviciute G, Ayeni FE, Ryugo DK. Central projections of spiral ganglion neurons. In: Dabdoub A, Fritsch B, Popper AN, Fay RR, editors. *The Primary Auditory Neurons of the Mammalian Cochlea*. New York: Springer-Verlag; 2015. p. 157-190.

- Murphy KE, Gysbers AM, Abbott SK, Spiro AS, Furuta A, Cooper A, et al. Lysosomal-associated membrane protein 2 isoforms are differentially affected in early Parkinson's disease. *Movement Disorders* 2015; 30:1639-47. 10.1002/mds.26141
- Murphy AJ, Kraakman MJ, Kammoun HL, Dragoljevic D, Lee MK, Lawlor KE, et al. IL-18 Production from the NLRP1 Inflammasome Prevents Obesity and Metabolic Syndrome. *Cell Metabolism* Epub 2015/10/20. 10.1016/j.cmet.2015.09.024
- Murray DD, Suzuki K, Law M, Trebicka J, Neuhaus J, Wentworth D, et al. Circulating microRNAs in Sera Correlate with Soluble Biomarkers of Immune Activation but Do Not Predict Mortality in ART Treated Individuals with HIV-1 Infection: A Case Control Study. *PLoS One* 2015; 10: ARTN e0139981 10.1371/journal.pone.0139981
- N Nagrial AM, Chin VT, Sjoquist KM, Pajic M, Horvath LG, Biankin AV, Yip D. Second-line treatment in inoperable pancreatic adenocarcinoma: A systematic review and synthesis of all clinical trials. *Critical Reviews in Oncology/Hematology* 2015; 96:483-97. 10.1016/j.critrevonc.2015.07.007
- Nagy V, Cole T, Van Campenhout C, Khoung TM, Leung C, Vermeiren S, et al. The evolutionarily conserved transcription factor PRDM12 controls sensory neuron development and pain perception. *Cell Cycle* 2015; 14:1799-808. 10.1080/15384101.2015.1036209
- Nair P, Venkatesh B, Lee P, Kerr S, Hoechter DJ, Dimeski G, et al. A randomized study of a single dose of intramuscular cholecalciferol in critically ill adults. *Critical Care Medicine* 2015; 43:2313-20. 10.1097/CCM.0000000000001201
- Nesbitt H, Browne G, O'Donovan KM, Byrne NM, Worthington J, McKeown SR, McKenna DJ. Nitric Oxide Up-Regulates RUNX2 in LNCaP Prostate Tumours: Implications for Tumour Growth In Vitro and In Vivo. *Journal of Cellular Physiology* Epub 2015/02/01; 231:473-82. 10.1002/jcp.25093
- Neuhaus SJ, Thomas D, Desai J, Vuletic C, von Dincklage J, Olver I. Wiki-based clinical practice guidelines for the management of adult onset sarcoma: a new paradigm in sarcoma evidence. *Sarcoma* 2015; 2015:614179. 10.1155/2015/614179
- Neupane M, Clark AP, Landini S, Birkbak NJ, Eklund AC, Lim E, et al. MECP2 Is a Frequently Amplified Oncogene with a Novel Epigenetic Mechanism that Mimics the Role of Activated RAS in Malignancy. *Cancer Discov* Epub 2015/11/06. 10.1158/2159-8290.CD-15-0341
- Nguyen AD, Lee NJ, Wee NK, Zhang L, Enriquez RF, Khor EC, et al. Uncoupling protein-1 is protective of bone mass under mild cold stress conditions. *Bone* Epub 2015/06/06. 10.1016/j.bone.2015.05.037
- Nguyen HT, von Schoultz B, Nguyen TV, Thang TX, Chau TT, Duc PT, Hirschberg AL. Sex hormone levels as determinants of bone mineral density and osteoporosis in Vietnamese women and men. *J Bone Miner Metab* 2015; 33:658-65. 10.1007/s00774-014-0629-z
- Nguyen TV, Seeman E. Osteoporosis: treat or let die twice more likely. *Journal of Bone and Mineral Research* 2015; 30:1551-2. 10.1002/jbmr.2601
- Niu T, Liu N, Yu X, Zhao M, Choi HJ, Leo PJ, et al. Identification of IDUA and WNT16 Phosphorylation-Related Non-Synonymous Polymorphisms for Bone Mineral Density in Meta-Analyses of Genome-Wide Association Studies. *Journal of Bone and Mineral Research* Epub 2015/08/08. 10.1002/jbmr.2687
- Niu T, Liu N, Zhao M, Xie G, Zhang L, Li J, et al. Identification of a novel FGFR1 MicroRNA target site polymorphism for bone mineral density in meta-analyses of genome-wide association studies. *Human Molecular Genetics* 2015; 24:4710-27. 10.1093/hmg/ddv144
- Northfield SE, Mountford SJ, Wielens J, Liu MJ, Zhang L, Herzog H, et al. Propargyloxypyrrolone Regio- and stereoisomers for click-conjugation of peptides: synthesis and application in linear and cyclic peptides. *Australian Journal of Chemistry* 2015; 68:1365-1372. 10.1071/Ch15146
- O O'Brien AR, Saunders NF, Guo Y, Buske FA, Scott RJ, Bauer DC. VariantSpark: population scale clustering of genotype information. *BMC Genomics* 2015; 16:1052. 10.1186/s12864-015-2269-7
- O'Donoghue SI, Sabir KS, Kalemans M, Stolte C, Wellmann B, Ho V, et al. Aquaria: simplifying discovery and insight from protein structures. *Nature Methods* 2015; 12:98-9. 10.1038/nmeth.3258
- O'Leary VB, Ovsepan SV, Carrascosa LG, Buske FA, Radulovic V, Niyazi M, et al. PARTICLE, a triplex-forming long ncRNA, regulates locus-specific methylation in response to low-dose irradiation. *Cell Reports* 2015; 11:474-85. 10.1016/j.celrep.2015.03.043
- Oellrich A, Collier N, Smedley D, Groza T. Generation of silver standard concept annotations from biomedical texts with special relevance to phenotypes. *PLoS One* 2015; 10:e0116040. 10.1371/journal.pone.0116040
- Okada S, Markle JG, Deenick EK, Mele F, Averbuch D, Lagos M, et al. Immunodeficiencies. Impairment of immunity to *Candida* and *Mycobacterium* in humans with bi-allelic RORC mutations. *Science* 2015; 349:606-13. 10.1126/science.aaa4282
- Omsland TK, Eisman JA, Naess O, Center JR, Gjesdal CG, Tell GS, et al. Educational inequalities in post-hip fracture mortality: A NOREPOS study. *Journal of Bone and Mineral Research* 2015; 30:2221-8. 10.1002/jbmr.2579
- Ooms LM, Binge LC, Davies EM, Rahman P, Conway JR, Gurung R, et al. The inositol polyphosphate 5-phosphatase PIPP regulates AKT1-dependent breast cancer growth and metastasis. *Cancer Cell* 2015; 28:155-69. 10.1016/j.ccell.2015.07.003
- Ottewill PD, Wang N, Brown HK, Fowles CA, Croucher PI, Eaton CL, Hohen I. OPG-Fc inhibits ovariectomy-induced growth of disseminated breast cancer cells in bone. *International Journal of Cancer* 2015; 137:968-77. 10.1002/ijc.29439
- P Pajic M, Herrmann D, Vennin C, Conway JR, Chin VT, Johnsson AK, et al. The dynamics of Rho GTPase signaling and implications for targeting cancer and the tumor microenvironment. *Small GTPases* 2015; 6:123-33. 10.4161/21541248.2014.973749
- Palmer EE, Hayner J, Sachdev R, Cardamone M, Kandula T, Morris P, et al. Asparagine Synthetase Deficiency causes reduced proliferation of cells under conditions of limited asparagine. *Molecular Genetics and Metabolism* 2015; 116:178-86. 10.1016/j.ymgme.2015.08.007
- Pal M, Febbraio MA, Lancaster GI. The Roles of c-Jun NH₂-Terminal Kinases (JNKs) in Obesity and Insulin Resistance. *Journal of Physiology* Epub 2015/11/26. 10.1113/JP271457
- Pangon L, Ng I, Giry-Laterriere M, Currey N, Morgan A, Benthani F, et al. JRK is a positive regulator of beta-catenin transcriptional activity commonly overexpressed in colon, breast and ovarian cancer. *Oncogene* Epub 2015/10/12. 10.1038/onc.2015.347
- Pangon L, Mladenova D, Watkins L, Van Kralingen C, Currey N, Al-Sohaily S, et al. MCC inhibits beta-catenin transcriptional activity by sequestering DBC1 in the cytoplasm. *International Journal of Cancer* 2015; 136:55-64. 10.1002/ijc.28967
- Papenfuss AT, Thomas D. The life history of neochromosomes revealed. *Mol Cell Oncol* 2015; 2:e1000698. 10.1080/23723556.2014.1000698
- Parisot JP, Thorne H, Fellowes A, Doig K, Lucas M, McNeil JJ, et al. A prospective, population-based cancer cohort-phase 1: feasibility of genomics-guided precision medicine in the clinic. *Journal of Personalized Medicine* 2015; 5:354-69. 10.3390/jpm5040354
- Park MH, Jin HK, Min WK, Lee WW, Lee JE, Akiyama H, et al. Neuropeptide Y regulates the hematopoietic stem cell microenvironment and prevents nerve injury in the bone marrow. *EMBO Journal* 2015; 34:1648-60. 10.15252/embj.201490174
- Parker BL, Yang G, Humphrey SJ, Chaudhuri R, Ma X, Peterman S, James DE. Targeted phosphoproteomics of insulin signaling using data-independent acquisition mass spectrometry. *Sci Signal* 2015; 8:rs6. 10.1126/scisignal.aaa3139
- Perdigao N, Heinrich J, Stolte C, Sabir KS, Buckley MJ, Tabor B, et al. Unexpected features of the dark proteome. *Proceedings of the National Academy of Sciences of the United States of America* 2015; 112:15898-903. 10.1073/pnas.1508380112
- Peters MJ, Joehanes R, Pilling LC, Schurmann C, Conneely KN, Powell J, et al. The transcriptional landscape of age in human peripheral blood. *Nature Communications* 2015; 6:8570. 10.1038/ncomms9570
- Peters TJ, Buckley MJ, Statham AL, Pidsley R, Samaras K, R VL, et al. De novo identification of differentially methylated regions in the human genome. *Epigenetics & Chromatin* 2015; 8:6. 10.1186/1756-8935-8-6
- Phad GE, Vazquez Bernat N, Feng Y, Ingale J, Martinez Murillo PA, O'Dell S, et al. Diverse antibody genetic and recognition properties revealed following HIV-1 envelope glycoprotein immunization. *Journal of Immunology* 2015; 194:5903-14. 10.4049/jimmunol.1500122
- Pham HM, Nguyen ND, Center JR, Eisman JA, Nguyen TV. Contribution of Quadriceps Weakness to Fragility Fracture: A Prospective Study. *Journal of Bone and Mineral Research* Epub 2015/07/14. 10.1002/jbmr.2594
- Phan TG, Long GV, Scolyer RA. Multiple checkpoints on the long road towards cancer immunotherapy. *Immunology and Cell Biology* 2015; 93:323-5. 10.1038/icc.2015.12
- Phan TG, Long GV, Scolyer RA. Checkpoint inhibitors for cancer immunotherapy. Multiple checkpoints on the long road towards cancer immunotherapy. *Immunology and Cell Biology* 2015; 93:323-5. 10.1038/icc.2015.12
- Phua YW, Nguyen A, Roden DL, Elsworth B, Deng N, Nikolic I, et al. MicroRNA profiling of the pubertal mouse mammary gland identifies miR-184 as a candidate breast tumour suppressor gene. *Breast Cancer Research* : BCR 2015; 17:83. 10.1186/s13058-015-0593-0
- Pinho AV, Bensellam M, Wauters E, Rees M, Giry-Laterriere M, Mawson A, et al. Pancreas-specific Sirt1-deficiency in mice compromises beta-cell function without development of hyperglycemia. *PLoS One* 2015; 10:e0128012. 10.1371/journal.pone.0128012
- Purtell L, Viardot A, Sze L, Loughnan G, Steinbeck K, Sainsbury A, et al. Postprandial metabolism in adults with Prader-Willi syndrome. *Obesity (Silver Spring)* 2015; 23:1159-65. 10.1002/oby.21041
- Q Qadi AA, Taberlay PC, Phillips JL, Young A, West AC, Brettingham-Moore KH, et al. The Leukemia Inhibitory Factor Receptor gene is a direct target of RUNX1. *Journal of Cellular Biochemistry* Epub 2015/06/08. 10.1002/jcb.25246

Qi Y, Fu M, Herzog H. Y2 receptor signalling in NPY neurons controls bone formation and fasting induced feeding but not spontaneous feeding. *Neuropeptides* Epub 2015/09/28. 10.1016/j.npep.2015.09.009

Qi Y, Inoue K, Fu M, Inui A, Herzog H. Chronic overproduction of ghrelin in the hypothalamus leads to temporal increase in food intake and body weight. *Neuropeptides* 2015; 50:23-8. 10.1016/j.npep.2015.02.002

Quek XC, Thomson DW, Maag JL, Bartonicek N, Signal B, Clark MB, et al. IncRNAdb v2.0: expanding the reference database for functional long noncoding RNAs. *Nucleic Acids Res* 2015; 43:D168-73. 10.1093/nar/gku988

R } Radhakutty A, Mangelsdorf BL, Drake SM, Samocha-Bonet D, Jenkins AB, Heilbronn LK, et al. Effect of acute and chronic glucocorticoid therapy on insulin sensitivity and postprandial vascular function. *Clin Endocrinol (Oxf)* Epub 2015/10/23. 10.1111/cen.12966

Rajendra S, Wang B, Merrett N, Sharma P, Humphris J, Lee HC, Wu J. Genomic analysis of HPV-positive versus HPV-negative oesophageal adenocarcinoma identifies a differential mutational landscape. *Journal of Medical Genetics* Epub 2015/10/15. 10.1136/jmedgenet-2015-103411

Raj Kumar K. Targeting glucocerebrosidase: Reduced enzymatic activity and Parkinson's disease. *Movement Disorders* 2015; 30:1620. 10.1002/mds.26379

Raj Kumar K, Fung VS. ADCY5 identified as a novel cause of benign hereditary chorea. *Movement Disorders* Epub 2015/09/26. 10.1002/mds.26434

Raj Kumar K, Fung VS. ADCY5 identified as a novel cause of benign hereditary chorea. *Movement DisJournal of Bone and Mineral Research* 2015; 30:1726. 10.1002/mds.26434

Reed JH, Gordon TP. Autoimmunity: Ro60-associated RNA takes its toll on disease pathogenesis. *Nature Reviews Rheumatology* Epub 2015/11/10. 10.1038/nrrheum.2015.148

Reppe S, Wang Y, Thompson WK, McEvoy LK, Schork AJ, Zuber V, et al. Genetic sharing with cardiovascular disease risk factors and diabetes reveals novel bone mineral density loci. *PLoS One* 2015; 10:e0144531. 10.1371/journal.pone.0144531

Roadmap Epigenomics C, Kundaje A, Meuleman W, Ernst J, Bilenky M, Yen A, et al. Integrative analysis of 111 reference human epigenomes. *Nature* 2015; 518:317-30. 10.1038/nature14248

Roden DL, Grey ST. Telling the tiger by its stripes: mapping the genomics of kidney graft tolerance in real time. *Kidney International* 2015; 87:875-7. 10.1038/ki.2015.66

Rogers S, Gloss BS, Lee CS, Sergio CM, Dinger ME, Musgrove EA, et al. Cyclin E2 is the predominant E-cyclin associated with NPAT in breast cancer cells. *Cell Division* 2015; 10:1. 10.1186/s13008-015-0007-9

Rogers S, McCloy RA, Parker BL, Chaudhuri R, Gayevskiy V, Hoffman NJ, et al. Dataset from the global phosphoproteomic mapping of early mitotic exit in human cells. *Data in Brief* 2015; 5:45-52. 10.1016/j.dib.2015.08.010

Rogers S, McCloy R, Watkins DN, Burgess A. Mechanisms regulating phosphatase specificity and the removal of individual phosphorylation sites during mitotic exit. *Inside the Cell* Epub 2015/12/01:n/a-n/a. 10.1002/icl3.1035

Roohollah A, Wong HL, Sjoquist KM, Gibbs P, Field K, Tran B, et al. Gastrointestinal perforation in metastatic colorectal cancer patients with peritoneal metastases receiving bevacizumab. *World Journal of Gastroenterology* 2015; 21:5352-8. 10.3748/wjg.v21.i17.5352

Rosenbaum S, Watkins A, Teasdale S, Curtis J, Samaras K, Kalucy M, et al. Aerobic exercise capacity: an important correlate of psychosocial function in first episode psychosis. *Acta Psychiatr Scand* 2015; 131:234. 10.1111/acps.12350

Rosic N, Ling EY, Chan CK, Lee HC, Kaniewska P, Edwards D, et al. Unfolding the secrets of coral-algal symbiosis. *ISME Journal* 2015; 9:844-56. 10.1038/ismej.2014.182

Rouet R, Dudgeon K, Christie M, Langley D, Christ D. Fully human VH single domains that rival the stability and cleft recognition of camelid antibodies *Journal of Biological Chemistry* 2015; 290:11905-17. 10.1074/jbc.M114.614842

Rynkiewicz NK, Fedele CG, Chiam K, Gupta R, Kench JG, Ooms LM, et al. INPP4B is highly expressed in prostate intermediate cells and its loss of expression in prostate carcinoma predicts for recurrence and poor long term survival. *Prostate* 2015; 75:92-102. 10.1002/pros.22895

Ryugo D. Auditory neuroplasticity, hearing loss and cochlear implants. *Cell Tissue Res* 2015; 361:251-69. 10.1007/s00441-014-2004-8

S } Sadler AJ, Rossello FJ, Yu L, Deane JA, Yuan X, Wang D, et al. BTB-ZF transcriptional regulator PLZF modifies chromatin to restrain inflammatory signaling programs. *Proceedings of the National Academy of Sciences of the United States of America* 2015; 112:1535-40. 10.1073/pnas.1409728112

Sainsbury A, Evans IR, Wood RE, Seimon RV, King NA, Hills AP, Byrne NM. Effect of a 4-week weight maintenance diet on circulating hormone levels: implications for clinical weight loss trials. *Clinical Obesity* 2015; 5:79-86. 10.1111/cob.12086

Samaras K, Crawford J, Lutgers HL, Campbell LV, Baune BT, Lux O, et al. Metabolic burden and disease and mortality risk associated with impaired fasting glucose in elderly adults. *Journal of Allergy and Clinical Immunology* 2015; 63:1435-42. 10.1111/jgs.13482

Samocha-Bonet D, Chisholm DJ, Holst JJ, Greenfield JR. L-glutamine and whole protein restore first-phase insulin response and increase glucagon-like Peptide-1 in type 2 diabetes patients. *Nutrients* 2015; 7:2101-8. 10.3390/nu7042101

Sampson JN, Wheeler WA, Yeager M, Panagiotou O, Wang Z, Berndt SI, et al. Analysis of heritability and shared heritability based on genome-wide association studies for thirteen cancer types. *J Natl Cancer Inst* 2015; 107. 10.1093/jnci/djv279

Santos A, Tsafou K, Stolte C, Pletscher-Frankild S, O'Donoghue SI, Jensen LJ. Comprehensive comparison of large-scale tissue expression datasets. *PeerJ* 2015; 3:e1054. 10.7717/peerj.1054

Sasson SC, McGill K, Wienholt L, Carr A, Brown DA, Kelleher AD, et al. Comparison of the Freelite serum free light chain (SFLC) assay with serum and urine electrophoresis/immunofixation and the N Latex FLC assay. *Pathology* 2015; 47:564-9. 10.1097/PAT.0000000000000316

Sasson SC, Smith SA, Qiu MR, Stone EC, Sewell WA. Monoclonal precursor T-cell infiltrate in recurrent thymoma: a case report. *Pathology* 2015; 47:375-7. 10.1097/PAT.0000000000000257

Saunus JM, Quinn MC, Patch AM, Pearson JV, Bailey PJ, Nones K, et al. Integrated genomic and transcriptomic analysis of human brain metastases identifies alterations of potential clinical significance. *Journal of Pathology* 2015; 237:363-78. 10.1002/path.4583

Schevzov G, Kee AJ, Wang B, Sequeira VB, Hook J, Coombes JD, et al. Regulation of cell proliferation by ERK and signal-dependent nuclear translocation of ERK is dependent on Tm5NM1-containing actin filaments. *Molecular Biology of the Cell* 2015; 26:2475-90. 10.1091/mbc.E14-10-1453

Scott C, Cha K, Rao R, Liddle C, George J, Gunton JE. Hepatocyte-specific deletion of ARNT (aryl hydrocarbon receptor nuclear translocator) results in altered fibrotic gene expression in the thioacetamide model of liver injury. *PLoS One* 2015; 10:e0121650. 10.1371/journal.pone.0121650

Seaman E, Nguyen TV. Bone remodeling markers: so easy to measure, so difficult to interpret. *Osteoporosis International* Epub 2015/11/11. 10.1007/s00198-015-3374-9

Selinger C, Cooper W, Lum T, McNeil C, Morey A, Waring P, et al. Equivocal ALK fluorescence in-situ hybridization (FISH) cases may benefit from ancillary ALK FISH probe testing. *Histopathology* 2015; 67:654-63. 10.1111/his.12708

Shearer RF, Iconomou M, Watts CK, Saunders DN. Functional roles of the E3 ubiquitin ligase UBR5 in cancer. *Molecular Cancer Research : MCR* 2015; 13:1523-32. 10.1158/1541-7786.MCR-15-0383

Shearer RF, Saunders DN. Experimental design for stable genetic manipulation in mammalian cell lines: lentivirus and alternatives. *Genes to Cells* 2015; 20:1-10. 10.1111/gtc.12183

Shi YC, Loh K, Bensellam M, Lee K, Zhai L, Lau J, et al. Pancreatic PYY is critical in the control of insulin secretion and glucose homeostasis in female mice. *Endocrinology* 2015; 156:3122-36. 10.1210/en.2015-1168

Shungin D, Winkler TW, Croteau-Chonka DC, Ferreira T, Locke AE, Magi R, et al. New genetic loci link adipose and insulin biology to body fat distribution. *Nature* 2015; 518:187-96. 10.1038/nature14132

Simons C, Rash LD, Crawford J, Ma L, Cristofori-Armstrong B, Miller D, et al. Mutations in the voltage-gated potassium channel gene KCNH1 cause Temple-Baraitser syndrome and epilepsy. *Nat Genet* 2015; 47:73-7. 10.1038/ng.3153

Sivanathan KN, Rojas-Canales DM, Hope CM, Krishnan R, Carroll RP, Gronthos S, et al. Interleukin-17A-induced human mesenchymal stem cells are superior modulators of immunological function. *Stem Cells* 2015; 33:2850-63. 10.1002/stem.2075

Slocumb ME, Regalado JM, Yoshizawa M, Neely GG, Masek P, Gibbs AG, Keene AC. Enhanced sleep is an evolutionarily adaptive response to starvation stress in drosophila. *PLoS One* 2015; 10:e0131275. 10.1371/journal.pone.0131275

Snyder JC, Mackaness CA, Sopher MR, Huber JP, Disantis EJ, Senecal AJ, et al. The complete mitochondrial genome sequence of the Canada goose (*Branta canadensis*). *Mitochondrial DNA* 2015; 26:672-3. 10.3109/19401736.2013.840601

Sogaard AJ, Holvik K, Omstand TK, Tell GS, Dahl C, Schei B, et al. Abdominal obesity increases the risk of hip fracture. A population-based study of 43 000 women and men aged 60-79 years followed for 8 years. Cohort of Norway. *J Intern Med* 2015; 277:306-17. 10.1111/joim.12230

Soldatos TG, Perdigo N, Brown NP, Sabir KS, O'Donoghue SI. How to learn about gene function: text-mining or ontologies? *Methods* 2015; 74:3-15. 10.1016/j.ymeth.2014.07.004

Soldatova LN, Collier N, Oellrich A, Groza T, Verspoor K, Rocca-Serra P, et al. Special issue on bio-ontologies and phenotypes. *Journal of Biomedical Semantics* 2015; 6:40. 10.1186/s13326-015-0040-2

- Spadaro PA, Flavell CR, Widagdo J, Ratnu VS, Troup M, Ragan C, et al. Long noncoding RNA-directed epigenetic regulation of gene expression is associated with anxiety-like behavior in mice. *Biological Psychiatry* 2015; 78:848-59. 10.1016/j.biopsych.2015.02.004
- Statham AL, Taberlay PC, Kelly TK, Jones PA, Clark SJ. Genome-wide nucleosome occupancy and DNA methylation profiling of four human cell lines. *Genomics Data* 2015; 3:94-6. 10.1016/j.gdata.2014.11.012
- Stayte S, Rentsch P, Li KM, Vissel B. Activin A protects midbrain neurons in the 6-hydroxydopamine mouse model of Parkinson's disease. *PLoS One* 2015; 10:e0124325. 10.1371/journal.pone.0124325
- Stirzaker C, Zotenko E, Song JZ, Qu W, Nair SS, Locke WJ, et al. Methyloome sequencing in triple-negative breast cancer reveals distinct methylation clusters with prognostic value. *Nature Communications* 2015; 6:5899. 10.1038/ncomms6899
- Stockli J, Meoli CC, Hoffman NJ, Fazakerley DJ, Pant H, Cleasby ME, et al. The RabGAP TBC1D1 plays a central role in exercise-regulated glucose metabolism in skeletal muscle. *Diabetes* 2015; 64:1914-22. 10.2337/db13-1489
- Stone A, Zotenko E, Locke WJ, Korbic D, Millar EK, Pidsley R, et al. DNA methylation of oestrogen-regulated enhancers defines endocrine sensitivity in breast cancer. *Nature Communications* 2015; 6:7758. 10.1038/ncomms8758
- Styrkarsdottir U, Thorleifsson G, Eiriksdottir B, Gudjonsson SA, Ingvarsson T, Center JR, et al. Two Rare Mutations in the COL1A2 Gene Associate With Low Bone Mineral Density and Fractures in Iceland. *Journal of Bone and Mineral Research* Epub 2015/08/01. 10.1002/jbmr.2604
- Suan D, Nguyen A, Moran I, Bourne K, Hermes JR, Arshi M, et al. T follicular helper cells have distinct modes of migration and molecular signatures in naive and memory immune responses. *Immunity* 2015; 42:704-18. 10.1016/j.immuni.2015.03.002
- Susanto JM, Colvin EK, Pinese M, Chang DK, Pajic M, Mawson A, et al. The epigenetic agents suberoylanilide hydroxamic acid and 5AZA2' deoxycytidine decrease cell proliferation, induce cell death and delay the growth of MiaPaCa2 pancreatic cancer cells in vivo. *International Journal of Oncology* 2015; 46:2223-30. 10.3892/ijo.2015.2894
- Tactacan CM, Phua YW, Liu L, Zhang L, Humphrey ES, Cowley M, et al. The pseudokinase Sgk223 promotes invasion of pancreatic ductal epithelial cells through JAK1/Stat3 signaling. *Molecular Cancer* 2015; 14:139. 10.1186/s12943-015-0412-3
- Tan SX, Fisher-Wellman KH, Fazakerley DJ, Ng Y, Pant H, Li J, et al. Selective insulin resistance in adipocytes. *Journal of Biological Chemistry* 2015; 290:11337-48. 10.1074/jbc.M114.623686
- Tangvik RJ, Tell GS, Guttormsen AB, Eisman JA, Henriksen A, Nilsen RM, Ranhoff AH. Nutritional risk profile in a university hospital population. *Clin Nutr* 2015; 34:705-11. 10.1016/j.clnu.2014.08.001
- Tangye SG. Advances in IL-21 biology-enhancing our understanding of human disease. *Current Opinion in Immunology* 2015; 34:107-115. 10.1016/j.coi.2015.02.010
- Tangye SG. Thucydides and longer-lived plasma cells. *Blood* 2015; 125:1684-5. 10.1182/blood-2015-01-622514
- Tangye SG, Brink R, Goodnow CC, Phan TG. SnapShot: Interactions between B Cells and T Cells. *Cell* 2015; 162:926-6 e1. 10.1016/j.cell.2015.07.055
- Tarahi Tabrizi S, Langley DB, Harrop SJ, Duff AP, Willows RD. Structure of GUN4 from *Chlamydomonas reinhardtii*. *Acta Crystallographica Section F: Structural Biology Communications* 2015; 71:1094-9. 10.1107/S2053230X15012248
- Tasan RO, Verma D, Wood J, Lach G, Horner B, de Lima TC, et al. The role of Neuropeptide Y in fear conditioning and extinction. *Neuropeptides* Epub 2015/09/25. 10.1016/j.npep.2015.09.007
- Tattersall MH, Thomas DM. Distinguishing activity from progress. *The Lancet. Oncology* 2015; 16:1586-8. 10.1016/S1470-2045(15)00466-0
- Teasdale S, Harris S, Rosenbaum S, Watkins A, Samaras K, Curtis J, Ward PB. Individual dietetic consultations in first episode psychosis: a novel intervention to reduce cardiometabolic risk. *Community Mental Health Journal* 2015; 51:211-4. 10.1007/s10597-014-9787-7
- Tevez G, McGrath S, Demeter R, Magrini V, Jeet V, Rockstroh A, et al. Identification of a novel fusion transcript between human relaxin-1 (RLN1) and human relaxin-2 (RLN2) in prostate cancer. *Journal of Bone and Mineral Research* Epub 2015/10/21. 10.1016/j.mce.2015.10.011
- Thaysen-Andersen M, Venkatakrishnan V, Loke I, Laurini C, Diestel S, Parker BL, Packer NH. Human neutrophils secrete bioactive paucimannosidic proteins from azurophilic granules into pathogen-infected sputum. *Journal of Biological Chemistry* 2015; 290:8789-802. 10.1074/jbc.M114.631622
- Thomas DM. The growing problem of benign connective tissue tumours. *The Lancet. Oncology* 2015; 16:879-80. 10.1016/S1470-2045(15)00147-3
- Thomas DM, Ballinger ML. Etiologic, environmental and inherited risk factors in sarcomas. *J Surg Oncol* 2015; 111:490-5. 10.1002/jso.23809
- Thomas DM, Fox S, Lorgelly PK, Ashley D, Richardson G, Lipton L, et al. Cancer 2015: a longitudinal whole-of-system study of genomic cancer medicine. *Drug Discovery Today* 2015; 20:1429-32. 10.1016/j.drudis.2015.10.009
- Thomas DM, James PA, Ballinger ML. Clinical implications of genomics for cancer risk genetics. *The Lancet. Oncology* 2015; 16:e303-8. 10.1016/S1470-2045(15)70026-4
- Thompson JE, Hayen A, Landau A, Haynes AM, Kalapara A, Ischia J, et al. Medium-term oncological outcomes for extended vs saturation biopsy and transrectal vs transperineal biopsy in active surveillance for prostate cancer. *BJU Int* 2015; 115:884-91. 10.1111/bju.12858
- Thompson JE, van Leeuwen PJ, Moses D, Shnier R, Brenner P, Delprado W, et al. The Diagnostic Performance of Multiparametric Magnetic Resonance Imaging to Detect Significant Prostate Cancer. *Journal of Urology* Epub 2015/10/31. 10.1016/j.juro.2015.10.140
- Ting F, Tran M, Böhm M, Siriwardana A, Van Leeuwen PJ, Haynes AM, et al. Focal irreversible electroporation for prostate cancer: functional outcomes and short-term oncological control. *Prostate Cancer and Prostatic Disease* 2015; 19:46-52. 10.1038/pcan.2015.47
- Ting F, van Leeuwen PJ, Delprado W, Haynes AM, Brenner P, Stricker PD. Tumor volume in insignificant prostate cancer: Increasing the threshold is a safe approach to reduce over-treatment. *Prostate* 2015; 75:1768-73. 10.1002/pros.23062
- Tomas-Roca L, Tsaalbi-Shtylik A, Jansen JG, Singh MK, Epstein JA, Altunoglu U, et al. De novo mutations in PLXND1 and REV3L cause Mobius syndrome. *Nature Communications* 2015; 6:7199. 10.1038/ncomms8199
- Tran M, Thompson J, Boehm M, Pulbrook M, Moses D, Shnier R, et al. Combination of multi-parametric magnetic resonance imaging (Mpm-Mri) and transperineal template-guided mapping biopsy (Tmb) of the prostate to identify candidates for hemi-ablative focal therapy. *Journal of Urology* 2015; 193:E1050-E1050. 10.1111/bju.13090
- Tran TN, Selinger CI, Kohonen-Corish MR, McCaughan B, Kennedy C, O'Toole SA, Cooper WA. Alterations of MET Gene Copy Number and Protein Expression in Primary Non-Small-Cell Lung Cancer and Corresponding Nodal Metastases. *Clinical Lung Cancer* Epub 2015/08/18. 10.1016/j.clcc.2015.08.002
- Tran TS, Center JR, Seibel MJ, Eisman JA, Kushnir MM, Rockwood AL, Nguyen TV. Relationship between serum testosterone and fracture risk in men: a comparison of RIA and LC-MS/MS. *Clinical Chemistry* 2015; 61:1182-90. 10.1373/clinchem.2015.242339
- Trefely S, Khoo PS, Krycer JR, Chaudhuri R, Fazakerley DJ, Parker BL, et al. Kinome Screen Identifies PFKFB3 and Glucose Metabolism as Important Regulators of the Insulin/Insulin-like Growth Factor (IGF)-1 Signaling Pathway. *Journal of Biological Chemistry* 2015; 290:25834-46. 10.1074/jbc.M115.658815
- Tsai WW, Macia L, Feinle-Bisset C, Manandhar R, Astrup A, Raben A, et al. Serum levels of human MIC-1/GDF15 vary in a diurnal pattern, do not display a profile suggestive of a satiety factor and are related to BMI. *PLoS One* 2015; 10:e0133362. 10.1371/journal.pone.0133362
- Valdes-Mora F, Clark SJ. Prostate cancer epigenetic biomarkers: next-generation technologies. *Oncogene* 2015; 34:1609-1618. 10.1038/onc.2014.111
- Van Dijk SJ, Molloy PL, Varinli H, Morrison JL, Muhlhauser BS, members of Epi S, members of Epi S. Epigenetics and human obesity. *Int J Obes (Lond)* 2015; 39:85-97. 10.1038/ijo.2014.34
- Van Geldermalsen M, Wang Q, Nagarajah R, Marshall AD, Thoeng A, Gao D, et al. ASCT2/SLC1A5 controls glutamine uptake and tumour growth in triple-negative basal-like breast cancer. *Oncogene* Epub 2015/10/12. 10.1038/onc.2015.381
- Varinli H, Osmond-McLeod MJ, Molloy PL, Vallotton P. LipiD-Quant: a novel method to quantify lipid accumulation in live cells. *Journal of Lipid Research* 2015; 56:2206-16. 10.1194/jlr.D059758
- Varinli H, Statham AL, Clark SJ, Molloy PL, Ross JP. COBRA-Seq: sensitive and quantitative methylome profiling. *Genes (Basel)* 2015; 6:1140-63. 10.3390/genes6041140
- Vazquez-Lombardi R, Phan TG, Zimmermann C, Lowe D, Jermutus L, Christ D. Challenges and opportunities for non-antibody scaffold drugs. *Drug Discovery Today* 2015; 20:1271-83. 10.1016/j.drudis.2015.09.004
- Vennin C, Pajic M, Timpson P. Imaging fibrosis in pancreatic cancer using second harmonic generation. *Pancreatology* 2015; 15:200-1.
- Verhelst K, Gardam S, Borghi A, Kreike M, Carpentier I, Beyaert R. XEDAR activates the non-canonical NF-kappaB pathway. *Biochemical and Biophysical Research Communications* 2015; 465:275-80. 10.1016/j.bbrc.2015.08.019
- Verma D, Wood J, Lach G, Herzog H, Sperk G, Tasan R. Hunger Promotes Fear Extinction by Activation of an Amygdala Microcircuit. *Neuropsychopharmacology* Epub 2015/06/11. 10.1038/npp.2015.163

Verma D, Wood J, Lach G, Mietzsch M, Weger S, Heilbronn R, et al. NPY Y2 receptors in the central amygdala reduce cued but not contextual fear. *Neuropharmacology* 2015; 99:665-674. 10.1016/j.neuropharm.2015.08.038

Vieira AT, Macia L, Galvao I, Martins FS, Canesso MC, Amaral FA, et al. A role for the gut microbiota and the metabolite sensing receptor GPR43 in a murine model of gout. *Arthritis Rheumatology* 2015; 67:1646-56. 10.1002/art.39107

Villanueva JE, Malle EK, Gardam S, Silveira PA, Zammit NW, Walters SN, et al. TRAF2 regulates peripheral CD8(+) T-cell and NKT-cell homeostasis by modulating sensitivity to IL-15. *European Journal of Immunology* 2015; 45:1820-31. 10.1002/eji.201445416

Vlahov N, Scrace S, Soto MS, Grawenda AM, Bradley L, Pankova D, et al. Alternate RASSF1 transcripts control SRC activity, E-Cadherin contacts, and YAP-mediated invasion. *Current Biology* 2015; 25:3019-34. 10.1016/j.cub.2015.09.072

W > Waddell N, Pajic M, Patch AM, Chang DK, Kassahn KS, Bailey P, et al. Whole genomes redefine the mutational landscape of pancreatic cancer. *Nature* 2015; 518:495-501. 10.1038/nature14169

Wang N, Docherty F, Brown HK, Reeves K, Fowles A, Lawson M, et al. Mitotic transience, but not unique "stemness," marks the phenotype of bone metastasis-initiating cells in prostate cancer. *FASEB Journal* 2015; 29:3141-50. 10.1096/fj.14-266379

Wang N, Reeves KJ, Brown HK, Fowles AC, Docherty FE, Ottewell PD, et al. The frequency of osteolytic bone metastasis is determined by conditions of the soil, not the number of seeds; evidence from in vivo models of breast and prostate cancer. *Journal of Experimental and Clinical Cancer Research* 2015; 34:124. 10.1186/s13046-015-0240-8

Wang S, Yu B, Ng CC, Mercorella B, Selinger CI, O'Toole SA, Cooper WA. The suitability of small biopsy and cytology specimens for EGFR and other mutation testing in non-small cell lung cancer. *Translational Lung Cancer Research* 2015; 4:119-25. 10.3978/j.issn.2218-6751.2015.01.05

Warton K, Samimi G. Methylation of cell-free circulating DNA in the diagnosis of cancer. *Frontiers in Molecular Biosciences* 2015; 2:13. 10.3389/fmolb.2015.00013

Wee NK, Kulkarni RN, Horsnell H, Baldock PA. The brain in bone and fuel metabolism. *Bone* Epub 2015/11/05. 10.1016/j.bone.2015.10.020

Wee ZN, Yatim SM, Kohlbaauer VK, Feng M, Goh JY, Bao Y, et al. Corrigendum: IRAK1 is a therapeutic target that drives breast cancer metastasis and resistance to paclitaxel. *Nature Communications* 2015; 6:10054. 10.1038/ncomms10054

Wee ZN, Yatim SM, Kohlbaauer VK, Feng M, Goh JY, Yi B, et al. IRAK1 is a therapeutic target that drives breast cancer metastasis and resistance to paclitaxel. *Nature communications* 2015; 6:8746. 10.1038/ncomms9746

Weiss PH, Herzog J, Potter-Nerger M, Falk D, Herzog H, Deuschl G, et al. Subthalamic nucleus stimulation improves Parkinsonian gait via brainstem locomotor centers. *Movement Disorders* 2015; 30:1121-5. 10.1002/mds.26229

Werner A, Piatek MJ, Mattick JS. Transpositional shuffling and quality control in male germ cells to enhance evolution of complex organisms. *Annals of the New York Academy of Sciences* 2015; 1341:156-63. 10.1111/nyas.12608

Wertz IE, Newton K, Seshasayee D, Kusam S, Lam C, Zhang J, et al. Phosphorylation and linear ubiquitin direct A20 inhibition of inflammation. *Nature* 2015; 528:370-5. 10.1038/nature16165

Wertz IE, Newton K, Seshasayee D, Kusam S, Lam C, Zhang J, et al. Erratum: Phosphorylation and linear ubiquitin direct A20 inhibition of inflammation. *Nature* Epub 2016/01/13. 10.1038/nature16541

Wiley J, Westbrook M, Long J, Greenfield JR, Day RO, Braithwaite J. Multidisciplinary diabetes team care: the experiences of young adults with Type 1 diabetes. *Health Expectations* 2015; 18:1783-96. 10.1111/hex.12170

Williams RS, Heilbronn LK, Chen DL, Coster AC, Greenfield JR, Samocho-Bonet D. Dietary acid load, metabolic acidosis and insulin resistance - Lessons from cross-sectional and overfeeding studies in humans. *Clin Nutr* Epub 2015/08/12. 10.1016/j.clnu.2015.08.002

Williams RS, Kozan P, Samocho-Bonet D. The role of dietary acid load and mild metabolic acidosis in insulin resistance in humans. *Biochimie* Epub 2015/09/10. 10.1016/j.biochi.2015.09.012

Wilson RP, Ives ML, Rao G, Lau A, Payne K, Kobayashi M, et al. STAT3 is a critical cell-intrinsic regulator of human unconventional T cell numbers and function. *The Journal of Experimental Medicine* 2015; 212:855-64. 10.1084/jem.20141992

Wong MK, Krycer JR, Burchfield JG, James DE, Kuncic Z. A generalised enzyme kinetic model for predicting the behaviour of complex biochemical systems. *FEBS Open Biology* 2015; 5:226-39. 10.1016/j.fob.2015.03.002

Wong SQ, Fellowes A, Doig K, Ellul J, Bosma TJ, Irwin D, et al. Assessing the clinical value of targeted massively parallel sequencing in a longitudinal, prospective population-based study of cancer patients. *British Journal of Cancer* 2015; 112:1411-20. 10.1038/bjc.2015.80

Wood J, Verma D, Lach G, Bonaventure P, Herzog H, Sperk G, Tasan RO. Structure and function of the amygdaloid NPY system: NPY Y2 receptors regulate excitatory and inhibitory synaptic transmission in the centromedial amygdala. *Brain and Structural Function* Epub 2015/09/13. 10.1007/s00429-015-1107-7

X > Xu H, Moni MA, Lio P. Network regularised Cox regression and multiplex network models to predict disease comorbidities and survival of cancer. *Computational Biology and Chemistry* 2015; 59 Pt B:15-31. 10.1016/j.compbiolchem.2015.08.010

Y > Yang G, Murashige DS, Humphrey SJ, James DE. A positive feedback loop between Akt and mTORC2 via SIN1 phosphorylation. *Cell Reports* 2015; 12:937-43. 10.1016/j.celrep.2015.07.016

Yang S, Center JR, Eisman JA, Nguyen TV. Association between fat mass, lean mass, and bone loss: the Dubbo osteoporosis epidemiology study. *Osteoporosis International* 2015; 26:1381-6. 10.1007/s00198-014-3009-6

Yang S, Center JR, Eisman JA, Nguyen TV. Erratum to: Association between fat mass, lean mass, and bone loss: the Dubbo osteoporosis epidemiology study. *Osteoporosis International* 2015; 26:1865-6. 10.1007/s00198-015-3101-6

Yao J, Li J, Zhou L, Cheng J, Chim SM, Zhang G, et al. Protein kinase C inhibitor, GF109203X attenuates osteoclastogenesis, bone resorption and RANKL-induced NF-kappaB and NFAT activity. *Journal of Cellular Physiology* 2015; 230:1235-42. 10.1002/jcp.24858

Ye L, Robertson MA, Hesselton D, Stainier DY, Anderson RM. Glucagon is essential for alpha cell transdifferentiation and beta cell neogenesis. *Development* 2015; 142:1407-17. 10.1242/dev.117911

Yeap BB, Divitini ML, Gunton JE, Olynyk JK, Beilby JP, McQuillan B, et al. Higher ferritin levels, but not serum iron or transferrin saturation, are associated with Type 2 diabetes mellitus in adult men and women free of genetic haemochromatosis. *Clin Endocrinol (Oxf)* 2015; 82:525-32. 10.1111/cen.12529

Z > Zheng HF, Forgetta V, Hsu YH, Estrada K, Rosello-Diez A, Leo PJ, et al. Whole-genome sequencing identifies EN1 as a determinant of bone density and fracture. *Nature* 2015; 526:112-7. 10.1038/nature14878

Zhou J, Belov L, Chapuis P, Chan C, Armstrong N, Kaufman KL, et al. Surface profiles of live colorectal cancer cells and tumor infiltrating lymphocytes from surgical samples correspond to prognostic categories. *Journal of Immunology Methods* 2015; 416:59-68. 10.1016/j.jim.2014.11.001

Zhou L, Song F, Liu Q, Yang M, Zhao J, Tan R, et al. Berberine sulfate attenuates osteoclast differentiation through RANKL induced NF- B and NFAT pathways. *International Journal of Molecular Sciences* 2015; 16:27087-96. 10.3390/ijms161125998

Zibellini J, Seimon RV, Lee CM, Gibson AA, Hsu MS, Shapses SA, et al. Does diet-induced weight loss lead to bone loss in overweight or obese adults? A Systematic review and meta-analysis of clinical trials. *Journal of Bone and Mineral Research* 2015; 526:112-131. 10.1002/jbmr.2564

Zieba J, Low JK, Purtell L, Qi Y, Campbell L, Herzog H, Karl T. Behavioural characteristics of the Prader-Willi syndrome related biallelic Snord116 mouse model. *Neuropeptides* 2015; 53:71-7. 10.1016/j.nepep.2015.06.009



FIND US ON THESE SOCIAL MEDIA PLATFORMS:
@GarvanInstitute



GARVAN.ORG.AU



[GOOGLE+](#)



[FACEBOOK](#)



[TWITTER](#)



[YOUTUBE](#)



[LINKEDIN](#)



[FLICKR](#)