

BREAKTHROUGH MEDICAL RESEARCH



2017 Publications
GARVAN INSTITUTE OF MEDICAL RESEARCH



**GARVAN
INSTITUTE**
OF MEDICAL RESEARCH

Publications



362 total publications in 2017, including journal articles, reports, reviews, letters and book chapters.

93 papers in journals with an impact factor greater than 8.

289 original research papers.

Cover issues



Abolhassani et al., *J Exp Med* 2017; 214:91-106.
"Combined immunodeficiency and Epstein-Barr virus-induced B cell malignancy in humans with inherited CD70 deficiency"



Haddad and Nakamura, *Cell Chem Biol* 2017; 24:1-10
"PINK1-based screen shines light on autophagy enhancers for Parkinson's disease"



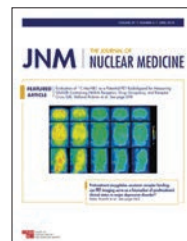
Oakes et al., *PLOS Genet* 2017; 13:e1007072
"A mutation in the viral sensor 2'-5'-oligoadenylate synthetase 2 causes failure of lactation"

impact

of an academic journal is a measure reflecting the yearly average number of citations to recent articles.



Vennin et al., *Sci Transl Med* 2017; 9: eaai8504
"Transient tissue priming via ROCK inhibition uncouples pancreatic cancer progression, sensitivity to chemotherapy, and metastasis"



Emmett et al., *J Nu Med* 2017; 58:1972-1976
"Treatment outcomes from 68GaPSMA PET CT informed salvage radiation treatment in men with rising PSA following radical prostatectomy: prognostic value of a negative PSMA PET"

Abolhassani H, Edwards ES, Ikinogullari A, Jing H, Borte S, Buggert M et al. Combined immunodeficiency and Epstein-Barr virus-induced B cell malignancy in humans with inherited CD70 deficiency. *Journal of Experimental Medicine* 2017; 214:91-106. DOI: 10.1084/jem.20160849

Achinger-Kawecka J, Clark SJ. Disruption of the 3D cancer genome blueprint. *Epigenomics* 2017; 9:47-55. DOI: 10.2217/epi-2016-0111

Achinger-Kawecka J, Taberlay PC, Clark SJ. Alterations in Three-Dimensional Organization of the Cancer Genome and Epigenome. *Cold Spring Harbour Symposia on Quantitative Biology* 2017; 81:41-51. DOI: 10.1101/sqb.2016.81.031013

Akladios B, Mendoza Reinoso V, Cain JE, Wang T, Lambie DL, Watkins DN, Beverdam A. Positive regulatory interactions between YAP and Hedgehog signalling in skin homeostasis and BCC development in mouse skin in vivo. *PLoS One* 2017; 12:e0183178. DOI: 10.1371/journal.pone.0183178

Androva H, Mastroianni J, Madl J, Kern JS, Melchinger W, Dierbach H et al. Biglycan expression in the melanoma microenvironment promotes invasiveness via increased tissue stiffness inducing integrin-beta1 expression. *Oncotarget* 2017; 8:42901-42916. DOI: 10.18632/oncotarget.17160

Au-Yeung G, Lang F, Azar WJ, Mitchell C, Jarman KE, Lackovic K et al. Selective targeting of cyclin E1-amplified high-grade serous ovarian cancer by cyclin-dependent kinase 2 and AKT Inhibition. *Clinical Cancer Research* 2017; 23:1862-1874. DOI: 10.1158/1078-0432.CCR-16-0620

Balaban S, Shearer RF, Lee LS, van Geldermalsen M, Schreuder M, Shtein HC et al. Adipocyte lipolysis links obesity to breast cancer growth: adipocyte-derived fatty acids drive breast cancer cell proliferation and migration. *Cancer & Metabolism* 2017; 5:1. DOI: 10.1186/s40170-016-0163-7

Papers in key journals

- 3** *Cell*
- 1** *Cell Metabolism*
- 3** *Immunity*
- 2** *Journal of Clinical Oncology*
- 2** *The Lancet*
- 2** *Nature*
- 3** *Nature Genetics*
- 1** *Nature Medicine*
- 1** *Science*

Annual Report

For a digital version of Garvan's 2017 Annual Report, please visit garvan.org.au/2017-annualreport.

- Balachandran VP, Luksza M, Zhao JN, Makarov V, Moral JA, Remark R et al. Identification of unique neoantigen qualities in long-term survivors of pancreatic cancer. *Nature* 2017; 551:512-516. DOI: 10.1038/nature24462
- Balachandran VP, Luksza M, Zhao JN, Makarov V, Moral JA, Remark R et al. Identification of unique neoantigen qualities in long-term survivors of pancreatic cancer. *Nature* 2017; 551:512-516. DOI: 10.1038/nature24462
- Balasubramaniam S, Riley LG, Bratkovic D, Ketteridge D, Manton N, Cowley MJ et al. Unique presentation of cutis laxa with Leigh-like syndrome due to ECHS1 deficiency. *Journal of Inherited Metabolic Disease* 2017; 40:745-747. DOI: 10.1007/s10545-017-0036-4
- Ballinger ML, Best A, Mai PL, Khincha PP, Loud JT, Peters JA et al. Baseline surveillance in Li-Fraumeni syndrome using whole-body magnetic resonance imaging: a meta-analysis. *JAMA Oncology* 2017; 3:1634-1639. DOI: 10.1001/jamaoncol.2017.1968
- Ballinger ML, Ferris NJ, Moodie K, Mitchell G, Shanley S, James PA, Thomas DM. Surveillance in germline TP53 mutation carriers utilizing whole-body magnetic resonance imaging. *JAMA Oncology* 2017; 3:1735-1736. DOI: 10.1001/jamaoncol.2017.1355
- Bankaitis K, Borriello L, Cox T, Lynch C, Zijlstra A, Fingleton B et al. Meeting report: Metastasis Research Society-Chinese Tumor Metastasis Society joint conference on metastasis. *Clinical & Experimental Metastasis* 2017; 34:203-213. DOI: 10.1007/s10585-017-9842-1
- Barry G, Briggs JA, Hwang DW, Nayler SP, Fortuna PR, Jonkhout N et al. The long non-coding RNA NEAT1 is responsive to neuronal activity and is associated with hyperexcitability states. *Scientific Reports* 2017; 7:40127. DOI: 10.1038/srep40127
- Bartonicek N, Clark MB, Quek XC, Torpy JR, Pritchard AL, Maag JLV et al. Intergenic disease-associated regions are abundant in novel transcripts. *Genome Biology* 2017; 18:241. DOI: 10.1186/s13059-017-1363-3
- Baynam G, Broley S, Bauskis A, Pachter N, McKenzie F, Townshend S et al. Initiating an undiagnosed diseases program in the Western Australian public health system. *Orphanet Journal of Rare Diseases* 2017; 12:83. DOI: 10.1186/s13023-017-0619-z
- Betts JA, Moradi Marjaneh M, Al-Ejeh F, Lim YC, Shi W, Sivakumaran H et al. Long noncoding RNAs CUPID1 and CUPID2 mediate breast cancer risk at 11q13 by modulating the response to DNA damage. *American Journal of Human Genetics* 2017; 101:255-266. DOI: 10.1016/j.ajhg.2017.07.007
- Binkley N, Blank RD, Leslie WD, Lewiecki EM, Eisman JA, Bilezikian JP. Osteoporosis in crisis: it's time to focus on fracture. *Journal of Bone and Mineral Research* 2017; 32:1391-1394. DOI: 10.1002/jbmr.3182
- Birzniece V, Barrett PHR, Ho KKY. Tamoxifen reduces hepatic VLDL production and GH secretion in women: a possible mechanism for steatosis development. *European Journal of Endocrinology* 2017; 177:137-143. DOI: 10.1530/EJE-17-0151
- Birzniece V, Ho KKY. Sex steroids and the GH axis: Implications for the management of hypopituitarism. *Best Practice & Research Clinical Endocrinology & Metabolism* 2017; 31:59-69. DOI: 10.1016/j.beem.2017.03.003
- Bogdanovic O, Lister R. DNA methylation and the preservation of cell identity. *Current Opinion in Genetics & Development* 2017; 46:9-14. DOI: 10.1016/j.gde.2017.06.007
- Bradbury RA, Lee P, Smith HC. Elevated anti-Mullerian hormone in lean women may not indicate polycystic ovarian syndrome. *Australian and New Zealand Journal of Obstetrics and Gynaecology* 2017; 57:552-557. DOI: 10.1111/ajo.12647
- Brockwell NK, Owen KL, Zanker D, Spurling A, Rautela J, Duivenvoorden HM et al. Neoadjuvant interferons: critical for effective PD-1 based immunotherapy in TNBC. *Cancer Immunology Research* 2017; 5:871-884. DOI: 10.1158/2326-6066.CIR-17-0150
- Brooks L, Viardot A, Tsakmaki A, Stolarczyk E, Howard JK, Cani PD et al. Fermentable carbohydrate stimulates FFAR2-dependent colonic PYY cell expansion to increase satiety. *Molecular Metabolism* 2017; 6:48-60. DOI: 10.1016/j.molmet.2016.10.011
- Burgess A, Vuong J, Rogers S, Malumbres M, O'Donoghue SI. Snapshot: phosphoregulation of mitosis. *Cell* 2017; 169:1358-1358.e1. DOI: 10.1016/j.cell.2017.06.003
- Burnett D, Parish I, Masle-Farquhar E, Brink R, Goodnow C. Murine LRBA-deficiency causes CTLA-4 deficiency in Tregs without progression to immune dysregulation. *Immunology and Cell Biology* 2017; 95:755-788. DOI: 10.1038/icb.2017.50
- Campbell LV. Genetics of obesity. *Australian Family Physician* 2017; 46:456-459.
- Cancer Genome Atlas Research Network. Integrated genomic characterization of pancreatic ductal adenocarcinoma. *Cancer Cell* 2017; 32:185-203. DOI: 10.1016/j.ccell.2017.07.007
- Capistrano-Gossmann GG, Ries D, Holtgrawe D, Minoche A, Kraft T, Frerichmann SLM et al. Crop wild relative populations of *Beta vulgaris* allow direct mapping of agronomically important genes. *Nature Communications* 2017; 8:15708. DOI: 10.1038/ncomms15708
- Casanueva FF, Barkan AL, Buchfelder M, Klibanski A, Laws ER, Loeffler JS et al. Criteria for the definition of Pituitary Tumor Centers of Excellence (PTCOE): a Pituitary Society statement. *Pituitary* 2017; 20:489-498. DOI: 10.1007/s11102-017-0838-2
- Center JR. Fracture Burden: what two and a half decades of Dubbo Osteoporosis Epidemiology Study data reveal about clinical outcomes of osteoporosis. *Current Osteoporosis Reports* 2017; 15:88-95. DOI: 10.1007/s11914-017-0352-5

- Chaganti SS, McCusker EA, Loy CT. What do we know about late onset Huntington's disease? *Journal of Huntington's Disease* 2017; 6:95-103. DOI: 10.3233/JHD-170247
- Chai RC, McDonald MM, Terry RL, Kovačić N, Down JM, Pettitt JA et al. Melphalan modifies the bone microenvironment by enhancing osteoclast formation. *Oncotarget* 2017; 8:68047-68058. DOI: 10.18632/oncotarget.19152
- Chai RC, Vieuxseux JL, Lang BJ, Nguyen CH, Kouspou MM, Britt KL, Price JT. Histone deacetylase activity mediates acquired resistance towards structurally diverse HSP90 inhibitors. *Molecular Oncology* 2017; 11:567-583. DOI: 10.1002/1878-0261.12054
- Chang J, Leong RW, Wasinger V, IP M, Yang M, Giang Phan T. Impaired intestinal permeability contributes to ongoing bowel symptoms in patients with inflammatory bowel disease and mucosal healing. *Gastroenterology* 2017; 153:723-731. DOI: 10.1053/j.gastro.2017.05.056
- Chang J, Lucas MC, Leonte LE, Garcia-Montolio M, Singh LB, Findlay AD et al. Pre-clinical evaluation of small molecule LOXL2 inhibitors in breast cancer. *Oncotarget* 2017; 8:26066-26078. DOI: 10.18632/oncotarget.15257
- Charrasse S, Gharbi-Ayachi A, Burgess A, Vera J, Hached K, Raynaud P et al. Ensa controls S-phase length by modulating Treslin levels. *Nature Communications* 2017; 8:206. DOI: 10.1038/s41467-017-00339-4
- Chemmanam J IsaacsI. Interpreting insulin immunoassays during investigation of apparent spontaneous hypoglycaemia and insulin overdose. *Internal Medicine Journal* 2017; 47:1448-1451. DOI: 10.1111/imj.13644
- Chen DL, Brown R, Liess C, Poljak A, Xu A, Zhang J et al. Muscle sympathetic nerve activity is associated with liver insulin sensitivity in obese non-diabetic men. *Frontiers in Physiology* 2017; 8:101. DOI: 10.3389/fphys.2017.00101
- Chin V, Vennin C, Timpson P, Pajic M. Effective modulation of stromal signaling through ROCK inhibition: is it all in the timing? *Molecular & Cellular Oncology* 2017; 4:e1333973. DOI: 10.1080/23723556.2017.1333973
- Chou A, Hes O, Turchini J, Trpkov K, Gill AJ. Do significant TFE3 gene rearrangements occur in succinate dehydrogenase-deficient renal cell carcinoma? Borderline FISH results should be interpreted with caution. *Modern Pathology* 2017; 30:1507-1508. DOI: 10.1038/modpathol.2017.77
- Christensen JM, Cheng J, Earls P, Gunton J, Sewell W, Sacks R, Harvey RJ. Vitamin D pathway regulatory genes encoding 1alpha-hydroxylase and 24-hydroxylase are dysregulated in sinonasal tissue during chronic rhinosinusitis. *International Forum of Allergy & Rhinology* 2017; 7:169-176. DOI: 10.1002/alr.21852
- Christie EL, Fereday S, Doig K, Pattnaik S, Dawson SJ, Bowtell DDL. Reversion of BRCA1/2 germline mutations detected in circulating tumor DNA from patients with high-grade serous ovarian cancer. *Journal of Clinical Oncology* 2017; 35:1274-1280. DOI: 10.1200/JCO.2016.70.4627
- Clark IA, Vissel B. The meteorology of cytokine storms, and the clinical usefulness of this knowledge. *Seminars in Immunopathology* 2017; 39:505-516. DOI: 10.1007/s00281-017-0628-y
- Clark SJ, Molloy PL. Smoke-Induced changes to the epigenome provide fertile ground for oncogenic mutation. *Cancer Cell* 2017; 32:278-280. DOI: 10.1016/j.ccell.2017.08.016
- Conduit SE, Ramaswamy V, Remke M, Watkins DN, Wainwright BJ, Taylor MD et al. A compartmentalized phosphoinositide signaling axis at cilia is regulated by INPP5E to maintain cilia and promote Sonic Hedgehog medulloblastoma. *Oncogene* 2017; 36:5969-5984. DOI: 10.1038/onc.2017.208
- Connelly CJ, Ryugo DK, Muniak MA. The effect of progressive hearing loss on the morphology of endbulbs of Held and bushy cells. *Hearing Research* 2017; 343:14-33. DOI: 10.1016/j.heares.2016.07.004
- Conway JRW, Vennin C, Cazet AS, Herrmann D, Murphy KJ, Warren SC et al. Three-dimensional organotypic matrices from alternative collagen sources as pre-clinical models for cell biology. *Scientific Reports* 2017; 7:16887. DOI: 10.1038/s41598-017-17177-5
- Conway JRW, Warren SC, Timpson P. Context-dependent intravital imaging of therapeutic response using intramolecular FRET biosensors. *Methods* 2017; 128:78-94. DOI: 10.1016/j.ymeth.2017.04.014
- Corpuz TM, Vazquez-Lombardi R, Luong JK, Warren J, Stolp J, Christ D et al. IL-2 Shapes the survival and plasticity of IL-17-producing gammadelta T cells. *Journal of Immunology* 2017; 199:2366-2376. DOI: 10.4049/jimmunol.1700335
- Corr A, Smith J, Baldock P. Neuronal control of bone remodeling. *Toxicologic Pathology* 2017; 45:894-903. DOI: 10.1177/0192623317738708
- Cotterell J, Neely G. A strategy for effective latent HIV reactivation using subtherapeutic drug doses. *Scientific Reports* 2017; 7:16644. DOI: 10.1038/s41598-017-00097-9
- Cottineau J, Kottemann MC, Lach FP, Kang YH, Vély F, Deenick EK et al. Inherited GINS1 deficiency underlies growth retardation along with neutropenia and NK cell deficiency. *Journal of Clinical Investigation* 2017; 127:1991-2006. DOI: 10.1172/JCI90727
- Coulson R, Liew SH, Connelly AA, Yee NS, Deb S, Kumar B et al. The angiotensin receptor blocker, Losartan, inhibits mammary tumor development and progression to invasive carcinoma. *Oncotarget* 2017; 8:18640-18656. DOI: 10.18632/oncotarget.15553

- Crowther CA, Ashwood P, McPhee AJ, Flenady V, Tran T, Dodd JM et al. Vaginal progesterone pessaries for pregnant women with a previous preterm birth to prevent neonatal respiratory distress syndrome (the PROGRESS Study): A multicentre, randomised, placebo-controlled trial. *PloS Medicine* 2017; 14:e1002390. DOI: 10.1371/journal.pmed.1002390
- Crumbaker M, Gurney H. Dose considerations for anti-cancer drugs in metastatic prostate cancer. *Prostate* 2017; 77:1199-1204. DOI: 10.1002/pros.23378
- Crumbaker M, Khoja L, Joshua AM. AR signaling and the PI3K pathway in prostate cancer. *Cancers* 2017; 9:34. DOI: 10.3390/cancers9040034
- De Bock CE, Hughes MR, Snyder K, Alley S, Sadeqzadeh E, Dun MD et al. Protein interaction screening identifies SH3RF1 as a new regulator of FAT1 protein levels. *FEBS Letters* 2017; 591:667-678. DOI: 10.1002/1873-3468.12569
- De Sousa SM, Chapman IM, Falhammar H, Torpy DJ. Dopamine testotoxicosis: disruptive hypersexuality in hypogonadal men with prolactinomas treated with dopamine agonists. *Endocrine* 2017; 55:618-624. DOI: 10.1007/s12020-016-1088-1
- De Sousa SM, McCabe MJ, Wu K, Roscioli T, Gayevskiy V, Brook K et al. Germline variants in familial pituitary tumour syndrome genes are common in young patients and families with additional endocrine tumours. *European Journal of Endocrinology* 2017; 176:635-644. DOI: 10.1530/EJE-16-0944
- De Sousa SM, McCormack AI, McGrath S, Torpy DJ. Prolactin correction for adequacy of petrosal sinus cannulation may diminish diagnostic accuracy in Cushing's disease. *Clinical Endocrinology* 2017; 87:515-522. DOI: 10.1111/cen.13401
- Deenick EK, Tangye SG. The TORC that gets the gc cycling. *Immunity* 2017; 46:974-976. DOI: 10.1016/j.immuni.2017.06.003
- Deveson IW, Hardwick SA, Mercer TR, Mattick JS. The Dimensions, dynamics, and relevance of the mammalian noncoding transcriptome. *Trends in Genetics* 2017; 33:464-478. DOI: 10.1016/j.tig.2017.04.004
- Deveson IW, Holleley CE, Blackburn J, Marshall Graves JA, Mattick JS, Waters PD, Georges A. Differential intron retention in Jumonji chromatin modifier genes is implicated in reptile temperature-dependent sex determination. *Science Advances* 2017; 3:e1700731. DOI: 10.1126/sciadv.1700731
- Di Ieva A. Training in skull base surgery: a holistic perspective. *Journal of Neurosurgical Sciences* 2017; 61:690-691. DOI: 10.23736/S0390-5616.16.03652-3
- Di Michele J, Rotondo F, Kovacs K, Syro LV, Yousef GM, Cusimano MD, Di Ieva A. Vasculogenic mimicry in clinically non-functioning pituitary adenomas: a histologic study. *Pathology & Oncology Research* 2017; 23:803-809. DOI: 10.1007/s12253-017-0196-4
- Diamond T, Elder GJ. Is there a practical role for bone biopsy in chronic kidney disease? *Nephrology* 2017; 22 Suppl 2:22-26. DOI: 10.1111/nep.13017
- Dicks E, Song H, Ramus SJ, Oudenhove EV, Tyrer JP, Intermaggio MP et al. Germline whole exome sequencing and large-scale replication identifies FANCM as a likely high grade serous ovarian cancer susceptibility gene. *Oncotarget* 2017; 8:50930-50940. DOI: 10.18632/oncotarget.15871
- Dixon SC, Nagle CM, Wentzensen N, Trabert B, Beeghly-Fadiel A, Schildkraut JM et al. Use of common analgesic medications and ovarian cancer survival: results from a pooled analysis in the Ovarian Cancer Association Consortium. *British Journal of Cancer* 2017; 116:1223-1228. DOI: 10.1038/bjc.2017.68
- Doble B, John T, Thomas D, Fellowes A, Fox S, Lorgelly P. Cost-effectiveness of precision medicine in the fourth-line treatment of metastatic lung adenocarcinoma: an early decision analytic model of multiplex targeted sequencing. *Lung Cancer* 2017; 107:22-35. DOI: 10.1016/j.lungcan.2016.05.024
- Doble B, Schofield DJ, Roscioli T, Mattick JS. Prioritising the application of genomic medicine. *NPJ Genomic Medicine* 2017; 2:35. DOI: 10.1038/s41525-017-0037-0
- Duivenvoorden HM, Rautela J, Edgington-Mitchell LE, Spurling A, Greening DW, Nowell CJ et al. Myoepithelial cell-specific expression of stefin A as a suppressor of early breast cancer invasion. *Journal of Pathology* 2017; 243:496-509. DOI: 10.1002/path.4990
- Elangovan H, Chahal S, Gunton JE. Vitamin D in liver disease: current evidence and potential directions. *Biochimica et Biophysica Acta (BBA) – Molecular Basis of Disease* 2017; 1863:907-916. DOI: 10.1016/j.bbadis.2017.01.001
- Elder GJ. Chronic kidney disease mineral and bone disorders; controversies and directions. *Nephrology* 2017; 22 Suppl 2:5-8. DOI: 10.1111/nep.13022
- Elder GJ, Center J. The role of calcium and non calcium-based phosphate binders in chronic kidney disease. *Nephrology* 2017; 22 Suppl 2:42-46. DOI: 10.1111/nep.13031
- Elurbe DM, Paranjpe SS, Georgiou G, van Kruijsbergen I, Bogdanovic O, Gibeaux R et al. Regulatory remodeling in the allo-tetraploid frog *Xenopus laevis*. *Genome Biology* 2017; 18:198. DOI: 10.1186/s13059-017-1335-7
- Elyas E, Papaevangelou E, Alles EJ, Erler JT, Cox TR, Robinson SP, Bamber JC. Correlation of ultrasound shear wave elastography with pathological analysis in a xenograft tumour model. *Scientific Reports* 2017; 7:165. DOI: 10.1038/s41598-017-00144-5

- Emmett L, Van Leeuwen P, Nandurkar R, Scheltema MJ, Cusick T, Hruby G et al. Treatment outcomes from 68GaPSMA PET CT informed salvage radiation treatment in men with rising PSA following radical prostatectomy: prognostic value of a negative PSMA PET. *Journal of Nuclear Medicine* 2017; 58:1972-1976. DOI: 10.2967/jnumed.117.196683
- Emmett L, Willowson K, Violet J, Shin J, Blanksby A, Lee J. Lutetium 177 PSMA radionuclide therapy for men with prostate cancer: a review of the current literature and discussion of practical aspects of therapy. *Journal of Medical Radiation Sciences* 2017; 64:52-60. DOI: 10.1002/jmrs.227
- Epstein RJ, Lin FP. Cancer and the omics revolution. *Australian Family Physician* 2017; 46:189-193.
- Etemadmoghadam D, Azar WJ, Lei Y, Moujaber T, Garsed DW, Kennedy CJ et al. EIF1AX and NRAS mutations co-occur and cooperate in low-grade serous ovarian carcinomas. *Cancer Research* 2017; 77:4268-4278. DOI: 10.1158/0008-5472.CAN-16-2224
- Everaert C, Luybaert M, Maag JLV, Cheng QX, Dinger ME, Hellemans J, Mestdagh P. Benchmarking of RNA-sequencing analysis workflows using whole-transcriptome RT-qPCR expression data. *Scientific Reports* 2017; 7:1559. DOI: 10.1038/s41598-017-01617-3
- Ewans LJ, Field M, Zhu Y, Turner G, Leffler M, Dinger ME et al. Gonadal mosaicism of a novel IQSEC2 variant causing female limited intellectual disability and epilepsy. *European Journal of Human Genetics* 2017; 25:763-767. DOI: 10.1038/ejhg.2017.29
- Farey JE, Preda TC, Fisher OM, Levert-Mignon AJ, Stewart RL, Karsten E et al. Effect of laparoscopic sleeve gastrectomy on fasting gastrointestinal, pancreatic, and adipose-derived hormones and on non-esterified fatty acids. *Obesity Surgery* 2017; 27:399-407. DOI: 10.1007/s11695-016-2302-1
- Fazekas-Lavu M, Parker A, Spigelman AD, Scott RJ, Epstein RJ, Jensen M, Samaras K. Thyroid cancer in a patient with Lynch syndrome - case report and literature review. *Therapeutics and Clinical Risk Management* 2017; 13:915-918. DOI: 10.2147/TCRM.S121812
- Febbraio MA. Exercise metabolism in 2016: health benefits of exercise – more than meets the eye! *Nature Reviews Endocrinology* 2017; 13:72-74. DOI: 10.1038/nrendo.2016.218
- Feigin ME, Garvin T, Bailey P, Waddell N, Chang DK, Kelley DR et al. Recurrent noncoding regulatory mutations in pancreatic ductal adenocarcinoma. *Nature Genetics* 2017; 49:825-833. DOI: 10.1038/ng.3861
- Fennessy N, Lee J, Shin J, Ho B, Ali SA, Paschkewitz R, Emmett L. Frusemide aids diagnostic interpretation of 68 Ga-PSMA positron emission tomography/CT in men with prostate cancer. *Journal of Medical Imaging and Radiation Oncology* 2017; 61:739-744. DOI: 10.1111/1754-9485.12625
- Fleuren EDG, Vlenterie M, van der Graaf W, Hillebrandt-Roeffen MHS, Blackburn J, Ma X et al. Phosphoproteomic profiling reveals ALK and MET as novel actionable targets across synovial sarcoma subtypes. *Cancer Research* 2017; 77:4279-4292. DOI: 10.1158/0008-5472.CAN-16-2550
- Gamell C, Gulati T, Levav-Cohen Y, Young RJ, Do H, Pilling P et al. Reduced abundance of the E3 ubiquitin ligase E6AP contributes to decreased expression of the INK4/ARF locus in non-small cell lung cancer. *Science Signalling* 2017; 10:eaaf8223. DOI: 10.1126/scisignal.aaf8223
- Garratt M, Nakagawa S, Simons MJP. Life-span extension with reduced somatotrophic signaling: moderation of aging effect by signal type, sex, and experimental cohort. *Journals of Gerontology Series A: Biological Sciences and Medical Sciences* 2017; 72:1620-1626. DOI: 10.1093/gerona/glx010
- Gaur V, Connor T, Venardos K, Henstridge DC, Martin SD, Swinton C et al. Scriptaid enhances skeletal muscle insulin action and cardiac function in obese mice. *Diabetes Obesity and Metabolism* 2017; 19:936-943. DOI: 10.1111/dom.12896
- Ginn SL, Hallwirth CV, Liao SH, Teber ET, Arthur JW, Wu J et al. Limiting thymic precursor supply increases the risk of lymphoid malignancy in Murine X-Linked severe combined immunodeficiency. *Molecular Therapy-Nucleic Acids* 2017; 6:1-14. DOI: 10.1016/j.omtn.2016.11.011
- Ginsburg SB, Algohary A, Pahwa S, Gulani V, Ponsky L, Aronen HJ et al. Radiomic features for prostate cancer detection on MRI differ between the transition and peripheral zones: preliminary findings from a multi-institutional study. *Journal of Magnetic Resonance Imaging* 2017; 46:184-193. DOI: 10.1002/jmri.25562
- Gloss BS, Signal B, Cheetham SW, Gruhl F, Kaczorowski DC, Perkins AC, Dinger ME. High resolution temporal transcriptomics of mouse embryoid body development reveals complex expression dynamics of coding and noncoding loci. *Scientific Reports* 2017; 7:6731. DOI: 10.1038/s41598-017-06110-5
- Gourlay ML, Ritter VS, Fine JP, Overman RA, Schousboe JT, Cawthon PM et al. Comparison of fracture risk assessment tools in older men without prior hip or spine fracture: the MrOS study. *Archives of Osteoporosis* 2017; 12:91. DOI: 10.1007/s11657-017-0389-1
- Grewal T, Hoque M, Conway JR, Reverter M, Wahba M, Beevi SS et al. Annexin A6-A multifunctional scaffold in cell motility. *Cell Adhesion & Migration* 2017; 11:288-304. DOI: 10.1080/19336918.2016.1268318
- Grey ST, Issa F. The 2017 Transplantation Awards: recognizing a landmark clinical trial and a basic science discovery with far-reaching implications. *Transplantation* 2017; 101:2655-2656. DOI: 10.1097/TP.0000000000001949

- Grey ST, Issa F, Tullius SG. Awards in transplantation science recognize the best articles published in *Transplantation*. *Transplantation* 2017; 101:2655-2656. DOI: 10.1097/TP.0000000000001580
- Grogan J, Gupta R, Mahon KL, Stricker PD, Haynes AM, Delprado W et al. Predictive value of the 2014 International Society of Urological Pathology grading system for prostate cancer in radical prostatectomy patients with long-term follow up. *BJU International* 2017; 120:651-658. DOI: 10.1111/bju.13857
- Grzelak CA, Sigglekow ND, Tirnitz-Parker JE, Hamson EJ, Warren A, Maneck B et al. Widespread GLI expression but limited canonical hedgehog signaling restricted to the ductular reaction in human chronic liver disease. *PLoS One* 2017; 12:e0171480. DOI: 10.1371/journal.pone.0171480
- Gururaj S, Palmer EE, Sheehan GD, Kandula T, Macintosh R, Ying K et al. A De Novo Mutation in the sodium-activated potassium channel KCNT2 alters ion selectivity and causes epileptic encephalopathy. *Cell Reports* 2017; 21:926-933. DOI: 10.1016/j.celrep.2017.09.088
- Ha DT, Dang TQ, Tran NV, Pham TN, Nguyen ND, Nguyen TV. Development and validation of a prognostic model for predicting 30-day mortality risk in medical patients in emergency department (ED). *Scientific Reports* 2017; 7:46474. DOI: 10.1038/srep46474
- Hamizan AW, Rimmer J, Alvarado R, Sewell WA, Kalish L, Sacks R, Harvey RJ. Positive allergen reaction in allergic and nonallergic rhinitis: a systematic review. *International Forum of Allergy & Rhinology* 2017; 7:868-877. DOI: 10.1002/alr.21988
- Haqshenas G, Wu J, Simpson KJ, Daly RJ, Netter HJ, Baumert TF, Doerig C. Signalome-wide assessment of host cell response to hepatitis C virus. *Nature Communications* 2017; 8:15158. DOI: 10.1038/ncomms15158
- Hardie RA, van Dam E, Cowley M, Han TL, Balaban S, Pajic M et al. Mitochondrial mutations and metabolic adaptation in pancreatic cancer. *Cancer & Metabolism* 2017; 5:2. DOI: 10.1186/s40170-017-0164-1
- Hardwick SA, Deveson IW, Mercer TR. Reference standards for next-generation sequencing. *Nature Reviews Genetics* 2017; 18:473-484. DOI: 10.1038/nrg.2017.44
- Harris G, O'Toole S, George P, Browett P, Print C. Massive parallel sequencing of solid tumours - challenges and opportunities for pathologists. *Histopathology* 2017; 70:123-133. DOI: 10.1111/his.13067
- Harris NL, Vennin C, Conway JR, Vine KL, Pinese M, Cowley MJ et al. SerpinB2 regulates stromal remodelling and local invasion in pancreatic cancer. *Oncogene* 2017; 36:4288-4298. DOI: 10.1038/onc.2017.63
- Hassan AM, Jain P, Mayerhofer R, Frohlich EE, Farzi A, Reichmann F et al. Visceral hyperalgesia caused by peptide YY deletion and Y2 receptor antagonism. *Scientific Reports* 2017; 7:40968. DOI: 10.1038/srep40968
- Haupt S, Vijayakumaran R, Panimaya J, Burgess A, Lim E, Haupt Y. The role of MDM2 and MDM4 in breast cancer development and prevention. *Journal of Molecular Cell Biology* 2017; 9:53-61. DOI: 10.1093/jmcb/mjx007
- Hendry S, Salgado R, Gevaert T, Russell PA, John T, Thapa B et al. Assessing tumor-infiltrating lymphocytes in solid tumors: a practical review for pathologists and proposal for a standardized method from the International Immunooncology Biomarkers Working Group: Part 1: Assessing the host immune response, TILs in invasive breast carcinoma and ductal carcinoma in situ, metastatic tumor deposits and areas for further research. *Advances in Anatomic Pathology* 2017; 24:235-251. DOI: 10.1097/PAP.0000000000000162
- Hendry S, Salgado R, Gevaert T, Russell PA, John T, Thapa B et al. Assessing Tumor-Infiltrating Lymphocytes in Solid Tumors: A Practical Review for Pathologists and Proposal for a Standardized Method from the International Immunooncology Biomarkers Working Group: Part 2: TILs in Melanoma, Gastrointestinal Tract Carcinomas, Non-Small Cell Lung Carcinoma and Mesothelioma, Endometrial and Ovarian Carcinomas, Squamous Cell Carcinoma of the Head and Neck, Genitourinary Carcinomas, and Primary Brain Tumors. *Advances in Anatomic Pathology* 2017; 24:311-335. DOI: 10.1097/PAP.0000000000000161
- Hewett DR, Vandyke K, Lawrence DM, Friend N, Noll JE, Geoghegan JM et al. DNA barcoding reveals habitual clonal dominance of myeloma plasma cells in the bone marrow microenvironment. *Neoplasia* 2017; 19:972-981. DOI: 10.1016/j.neo.2017.09.004
- Heywood SE, Richart AL, Henstridge DC, Alt K, Kiriazis H, Zammit C et al. High-density lipoprotein delivered after myocardial infarction increases cardiac glucose uptake and function in mice. *Science Translational Medicine* 2017; 9:eaam6084. DOI: 10.1126/scitranslmed.aam6084
- Hill JR, Coll RC, Sue N, Reid JC, Dou J, Holley CL et al. Sulfonylureas as concomitant insulin secretagogues and NLRP3 inflammasome inhibitors. *ChemMedChem* 2017; 12:1449-1457. DOI: 10.1002/cmde.201700270
- Hjorth M, Febbraio MA. IL-1beta delivers a sweet deal. *Nature Immunology* 2017; 18:247-248. DOI: 10.1038/ni.3681
- Ho-Le TP, Center JR, Eisman JA, Nguyen HT, Nguyen TV. Prediction of bone mineral density and fragility fracture by genetic profiling. *Journal of Bone and Mineral Research* 2017; 32:285-293. DOI: 10.1002/jbmr.2998

- Ho-Le TP, Center JR, Eisman JA, Nguyen TV, Nguyen HT. Prediction of hip fracture in post-menopausal women using artificial neural network approach. *39th Annual International Conference of the IEEE Engineering in Medicine and Biology Society (EMBC) 2017*; 4207-4210. DOI: 10.1109/EMBC.2017.8037784
- Ho-Pham LT, Lai TQ, Nguyen UD, Bui QV, Nguyen TV. Delineating the relationship between leptin, fat mass, and bone mineral density: a mediation analysis. *Calcified Tissue International* 2017; 100:13-19. DOI: 10.1007/s00223-016-0196-5
- Ho-Pham LT, Nguyen UDT, Tran TX, Nguyen TV. Discordance in the diagnosis of diabetes: comparison between HbA1c and fasting plasma glucose. *PLoS One* 2017; 12:e0182192. DOI: 10.1371/journal.pone.0182192
- Ho-Pham LT, Nguyen TV. The Vietnam Osteoporosis Study: rationale and design. *Osteoporosis and Sarcopenia* 2017; 3:90-97. DOI: 10.1016/j.afos.2017.06.001
- Hoang VLT, Tom LN, Quek XC, Tan JM, Payne EJ, Lin LL et al. RNA-seq reveals more consistent reference genes for gene expression studies in human non-melanoma skin cancers. *PeerJ* 2017; 5:e3631. DOI: 10.7717/peerj.3631
- Houweling PJ, Berman YD, Turner N, Quinlan KGR, Seto JT, Yang N et al. Exploring the relationship between alpha-actinin-3 deficiency and obesity in mice and humans. *International Journal of Obesity* 2017; 41:1154-1157. DOI: 10.1038/ijo.2017.72
- Hoy AJ, Balaban S, Saunders DN. Adipocyte-tumor cell metabolic crosstalk in breast cancer. *Trends in Molecular Medicine* 2017; 23:381-392. DOI: 10.1016/j.molmed.2017.02.009
- Hsu AC, Dua K, Starkey MR, Haw TJ, Nair PM, Nichol K et al. MicroRNA-125a and -b inhibit A20 and MAVS to promote inflammation and impair antiviral response in COPD. *Journal of Clinical Investigation Insight* 2017; 2:e90443. DOI: 10.1172/jci.insight.90443
- Hu DY, Wirasinha RC, Goodnow CC, Daley SR. IL-2 prevents deletion of developing T-regulatory cells in the thymus. *Cell Death and Differentiation* 2017; 24:1007-1016. DOI: 10.1038/cdd.2017.38
- Hui SP, Sheng DZ, Sugimoto K, Gonzalez-Rajal A, Nakagawa S, Hesselson D, and Kikuchi K. Zebrafish regulatory T cells mediate organ-specific regenerative programs. *Developmental Cell* 2017; 43:659-672. e5. DOI: 10.1186/s12915-017-0448-5
- Humphris JL, Patch AM, Nones K, Bailey PJ, Johns AL, McKay S et al. Hypermutation in pancreatic cancer. *Gastroenterology* 2017; 152:68-74 e2. DOI: 10.1053/j.gastro.2016.09.060
- Infantino S, Light A, O'Donnell K, Bryant V, Avery DT, Elliott M et al. Arginine methylation catalyzed by PRMT1 is required for B cell activation and differentiation. *Nature Communications* 2017; 8:891. DOI: 10.1038/s41467-017-01009-1
- Isaacs M, Lee P. Preoperative alpha-blockade in pheochromocytoma and paraganglioma: is it always necessary? *Clinical Endocrinology* 2017; 86:309-314. DOI: 10.1111/cen.13284
- Isaacs M, Tonks KT, Greenfield JR. Euglycaemic diabetic ketoacidosis in patients using sodium-glucose co-transporter 2 inhibitors. *Internal Medicine Journal* 2017; 47:701-704. DOI: 10.1111/imj.13442
- Jafari A, Qanie D, Andersen TL, Zhang Y, Chen L, Postert B et al. Legumain regulates differentiation fate of human bone marrow stromal cells and is altered in postmenopausal osteoporosis. *Stem Cell Reports* 2017; 8:373-386. DOI: 10.1016/j.stemcr.2017.01.003
- Jamsai D, Watkins DN, O'Connor AE, Merriner DJ, Gursoy S, Bird AD et al. In vivo evidence that RBM5 is a tumour suppressor in the lung. *Scientific Reports* 2017; 7:16323. DOI: 10.1038/s41598-017-15874-9
- Jandl C, Liu SM, Canete PF, Warren J, Hughes WE, Vogelzang A et al. IL-21 restricts T follicular regulatory T cell proliferation through Bcl-6 mediated inhibition of responsiveness to IL-2. *Nature Communications* 2017; 8:14647. DOI: 10.1038/ncomms14647
- Jandl C, Loetsch C, King C. Cytokine Expression by T follicular helper cells. *Methods in Molecular Biology* 2017; 1623:95-103. DOI: 10.1007/978-1-4939-7095-7_8
- Jaratlertsiri W, Chan EKF, Petersen DC, Yang C, Croucher PI, Bornman MSR et al. Next generation mapping reveals novel large genomic rearrangements in prostate cancer. *Oncotarget* 2017; 8:23588-23602. DOI: 10.18632/oncotarget.15802
- Johns AL. Lost in translation: returning germline genetic results in genome-scale cancer research. *Genome Medicine* 2017; 28:41. DOI: doi.org/10.1186/s13073-017-0430-4
- Jonkhout N, Tran J, Smith MA, Schonrock N, Mattick JS, Novoa EM. The RNA modification landscape in human disease. *RNA* 2017; 23:1754-1769. DOI: 10.1261/rna.063503.117
- Kalsbeek AMF, Chan EKF, Corcoran NM, Hovens CM, Hayes VM. Mitochondrial genome variation and prostate cancer: a review of the mutational landscape and application to clinical management. *Oncotarget* 2017; 8:71342-71357. DOI: 10.18632/oncotarget.19926
- Kalsbeek AMF, Chan EKF, Grogan J, Petersen DC, Jaratlertsiri W, Gupta R et al. Altered mitochondrial genome content signals worse pathology and prognosis in prostate cancer. *Prostate* 2017; 78:25-31. DOI: 10.1002/pros.23440
- Kammoun HL, Allen TL, Henstridge DC, Kraakman MJ, Peijs L, Rose-John S, Febbraio MA. Over-expressing the soluble gp130-Fc does not ameliorate methionine and choline deficient diet-induced non alcoholic steatohepatitis in mice. *PLoS One* 2017; 12:e0179099. DOI: 10.1371/journal.pone.0179099

- Kearney CJ, Vervoort SJ, Ramsbottom KM, Freeman AJ, Michie J, Peake J et al. DOCK8 drives SRC-dependent NK cell effector function. *Journal of Immunology* 2017; 199:2118-2127. DOI: 10.4049/jimmunol.1700751
- Kemp JP, Morris JA, Medina-Gomez C, Forgetta V, Warrington NM, Youten SE et al. Identification of 153 new loci associated with heel bone mineral density and functional involvement of GPC6 in osteoporosis. *Nature Genetics* 2017; 49:1468-1475. DOI: 10.1038/ng.3949
- Keshvari S, Henstridge DC, Ng C, Febbraio MA, Whitehead JP. Muscle-specific overexpression of AdipoR1 or AdipoR2 gives rise to common and discrete local effects whilst AdipoR2 promotes additional systemic effects. *Scientific Reports* 2017; 7:41792. DOI: 10.1038/srep41792
- Khoo TK, Yu B, Smith JA, Clarke AJ, Luk PP, Selinger CI et al. Somatic mutations in salivary duct carcinoma and potential therapeutic targets. *Oncotarget* 2017; 8:75893-75903. DOI: 10.18632/oncotarget.18173
- Knaupp AS, Buckberry S, Pflueger J, Lim SM, Ford E, Larcombe MR et al. Transient and permanent reconfiguration of chromatin and transcription factor occupancy drive reprogramming. *Cell Stem Cell* 2017; 21:834-845 e6. DOI: 10.1016/j.stem.2017.11.007
- Kocbek S, Kim JD. Exploring biomedical ontology mappings with graph theory methods. *PeerJ* 2017; 5:e2990. DOI: 10.7717/peerj.2990
- Kohler S, Vasilevsky NA, Engelstad M, Foster E, McMurry J, Ayme S et al. The human phenotype ontology in 2017. *Nucleic Acids Research* 2017; 45:D865-D876. DOI: 10.1093/nar/gkw1039
- Konrad CV, Murali R, Varghese BA, Nair R. The role of cancer stem cells in tumor heterogeneity and resistance to therapy. *Canadian Journal of Physiology and Pharmacology* 2017; 95:1-15. DOI: 10.1139/cjpp-2016-0079
- Koplev S, Longden J, Ferkinghoff-Borg J, Blicher Bjerregard M, Cox TR, Erler JT et al. Dynamic rearrangement of cell states detected by systematic screening of sequential anticancer treatments. *Cell Reports* 2017; 20:2784-2791. DOI: 10.1016/j.celrep.2017.08.095
- Kozan P, Blythe JC, Greenfield JR, Samocho-Bonet D. The effect of buffering high acid load meal with sodium bicarbonate on postprandial glucose metabolism in humans: a randomized placebo-controlled study. *Nutrients* 2017; 9:e861. DOI: 10.3390/nu9080861
- Kraakman MJ, Lee MK, Al-Sharea A, Dragoljevic D, Barrett TJ, Montenont E et al. Neutrophil-derived S100 calcium-binding proteins A8/A9 promote reticulated thrombocytosis and atherogenesis in diabetes. *Journal of Clinical Investigation* 2017; 127:2133-2147. DOI: 10.1172/JCI92450
- Krishnasamy R, Tan SJ, Hawley CM, Johnson DW, Stanton T, Lee K et al. Progression of arterial stiffness is associated with changes in bone mineral markers in advanced CKD. *BMC Nephrology* 2017; 18:281. DOI: 10.1186/s12882-017-0705-4
- Kräutler NJ, Suan D, Butt D, Bourne K, Hermes JR, Chan TD et al. Differentiation of germinal center B cells into plasma cells is initiated by high-affinity antigen and completed by Tfh cells. *Journal of Experimental Medicine* 2017; 214:1259-1267. DOI: 10.1084/jem.20161533
- Kuchenbaecker KB, McGuffog L, Barrowdale D, Lee A, Soucy P, Dennis J et al. Evaluation of polygenic risk scores for breast and ovarian cancer risk prediction in BRCA1 and BRCA2 mutation carriers. *Journal of the National Cancer Institute* 2017; 109:djw302. DOI: 10.1093/jnci/djw302
- Kulasinghe A, Perry C, Kenny L, Warkiani ME, Nelson C, Punyadeera C. PD-L1 expressing circulating tumour cells in head and neck cancers. *BMC Cancer* 2017; 17:333. DOI: 10.1186/s12885-017-3316-3
- Kumar SS, Graham GG, Smith FC, Furlong TF, Greenfield JR, Stocker SS et al. Could metformin be used in patients with advanced chronic kidney disease? *Diabetes Obesity and Metabolism* 2017; 19:302-303. DOI: 10.1111/dom.12806
- Kurosawa M, Arakaki R, Yamada A, Tsunematsu T, Kudo Y, Sprent J, Ishimaru N. NF- κ B2 Controls the Migratory Activity of Memory T Cells by Regulating Expression of CXCR4 in a Mouse Model of Sjögren's Syndrome. *Arthritis & Rheumatology* 2017; 69:2193-2202. DOI: 10.1002/art.40230
- Lagendijk AK, Gomez GA, Baek S, Hesselson D, Hughes WE, Paterson S et al. Live imaging molecular changes in junctional tension upon VE-cadherin in zebrafish. *Nature Communications* 2017; 8:1402. DOI: 10.1038/s41467-017-01325-6
- Lam T, Poljak A, McLean M, Bahl N, Ho KK, Birzniece V. Testosterone prevents protein loss via the hepatic urea cycle in human. *European Journal of Endocrinology* 2017; 176:489-496. DOI: 10.1530/EJE-16-0868
- Langley DB, Crossett B, Schofield P, Jackson J, Zeraati M, Maltby D et al. Structural basis of antigen recognition: crystal structure of duck egg lysozyme. *Acta Crystallographica Section D – Structural Biology* 2017; 73:910-920. DOI: 10.1107/S2059798317013730
- Lau J, Farzi A, Enriquez RF, Shi YC, Herzog H. GPR88 is a critical regulator of feeding and body composition in mice. *Scientific Reports* 2017; 7:9912. DOI: 10.1038/s41598-017-10058-x
- Law AMK, Yin JXM, Castillo L, Young AIJ, Piggan C, Rogers S et al. Andy's Algorithms: new automated digital image analysis pipelines for FIJI. *Scientific Reports* 2017; 7:15717. DOI: 10.1038/s41598-017-15885-6
- Law AM, Lim E, Ormandy CJ, Gallego-Ortega D. The innate and adaptive infiltrating immune systems as targets for breast cancer immunotherapy. *Endocrine-Related Cancer* 2017; 24:R123-R144. DOI: 10.1530/ERC-16-0404

- Leake J, Zinn R, Corbit L, Vissel B. Dissociation between complete hippocampal context memory formation and context fear acquisition. *Learning & Memory* 2017; 24:153-157. DOI: 10.1101/lm.044578.116
- Leitch VD, Di Cosmo C, Liao XH, O'Boy S, Galliford TM, Evans H et al. An essential physiological role for MCT8 in bone in male mice. *Endocrinology* 2017; 158:3055-3066. DOI: 10.1210/en.2017-00399
- Leroy B, Ballinger ML, Baran-Marszak F, Bond GL, Braithwaite A, Concin N et al. Recommended guidelines for validation, quality control, and reporting of TP53 variants in clinical practice. *Cancer Research* 2017; 77:1250-1260. DOI: 10.1158/0008-5472.CAN-16-2179
- Lheureux S, Lai Z, Dougherty BA, Runswick S, Hodgson DR, Timms KM et al. Long-term responders on Olaparib maintenance in high-grade serous ovarian cancer: clinical and molecular characterization. *Clinical Cancer Research* 2017; 23:4086-4094. DOI: 10.1158/1078-0432.CCR-16-2615
- Lim E, Johnson SF, Geyer M, Serra V, Shapiro GI. Sensitizing HR-proficient cancers to PARP inhibitors. *Molecular & Cellular Oncology* 2017; 4:e1299272. DOI: 10.1080/23723556.2017.1299272
- Lin FP, Pokorny A, Teng C, Epstein RJ. TEPAPA: a novel in silico feature learning pipeline for mining prognostic and associative factors from text-based electronic medical records. *Scientific Reports* 2017; 7:6918. DOI: 10.1038/s41598-017-07111-0
- Lin HM, Mahon KL, Spielman C, Gurney H, Mallesara G, Stockler MR et al. Phase 2 study of circulating microRNA biomarkers in castration-resistant prostate cancer. *British Journal of Cancer* 2017; 116:1002-1011. DOI: 10.1038/bjc.2017.50
- Lin HM, Mahon KL, Weir JM, Mundra PA, Spielman C, Briscoe K et al. A distinct plasma lipid signature associated with poor prognosis in castration-resistant prostate cancer. *International Journal of Cancer* 2017; 141:2112-2120. DOI: 10.1002/ijc.30903
- Loetsch C, Warren J et al. Cytosolic recognition of RNA drives the immune response to heterologous erythrocytes. *Cell Reports* 2017; 21:162-1638. DOI: 10.1016/j.celrep.2017.10.044
- Loh K, Shi YC, Walters S, Bensellam M, Lee K, Dezaki K et al. Inhibition of Y1 receptor signaling improves islet transplant outcome. *Nature Communications* 2017; 8:490. DOI: 10.1038/s41467-017-00624-2
- Loh K, Zhang L, Brandon A, Wang Q, Begg D, Qi Y et al. Insulin controls food intake and energy balance via NPY neurons. *Molecular Metabolism* 2017; 6:574-584. DOI: 10.1016/j.molmet.2017.03.013
- Lorgelly PK, Doble B, Rowen D, Brazier J, Cancer 2015 investigators. Condition-specific or generic preference-based measures in oncology? A comparison of the EORTC-8D and the EQ-5D-3L. *Quality of Life Research* 2017; 26:1163-1176. DOI: 10.1007/s11136-016-1443-y
- Ma CS, Deenick EK. The circulating life of a memory T-follicular helper cell. *Clinical & Translational Immunology* 2017; 6:e145. DOI: 10.1038/cti.2017.26
- Ma CS, Phan TG. Here, there and everywhere: T follicular helper cells on the move. *Immunology* 2017; 152:382-387. DOI: 10.1111/imm.12793
- Maag JLV, Fisher OM, Levert-Mignon A, Kaczorowski DC, Thomas ML, Hussey DJ et al. Novel aberrations uncovered in Barrett's esophagus and esophageal adenocarcinoma using whole transcriptome sequencing. *Molecular Cancer Research* 2017; 15:1558-1569. DOI: 10.1158/1541-7786.MCR-17-0332
- Maag JL, Kaczorowski DC, Panja D, Peters TJ, Bramham CR, Wibrand K, Dinger ME. Widespread promoter methylation of synaptic plasticity genes in long-term potentiation in the adult brain in vivo. *BMC Genomics* 2017; 18:250. DOI: 10.1186/s12864-017-3621-x
- Macdonald GC, Campbell LV. Comment on Young-Hyman et al. Psychosocial care for people with diabetes: a position statement of the American Diabetes Association. *Diabetes Care* 2016; 39:2126-2140. *Diabetes Care* 2017; 40:e129-e130. DOI: 10.2337/dc16-2718
- Mackie GM, Samocha-Bonet D, Tam CS. Does weight cycling promote obesity and metabolic risk factors? *Obesity Research & Clinical Practice* 2017; 11:131-139. DOI: 10.1016/j.orcp.2016.10.284
- Man K, Gabriel SS, Liao Y, Gloury R, Preston S, Henstridge DC et al. Transcription factor IRF4 promotes CD8(+) T cell exhaustion and limits the development of memory-like T Cells during chronic infection. *Immunity* 2017; 47:1129-1141.e5. DOI: 10.1016/j.immuni.2017.11.021
- Martinelli P, Carrillo-de Santa Pau E, Cox T, Sainz B, Dusetti N, Greenhalf W et al. GATA6 regulates EMT and tumour dissemination, and is a marker of response to adjuvant chemotherapy in pancreatic cancer. *Gut* 2017; 66:1665-1676. DOI: 10.1136/gutjnl-2015-311256
- Matsuda H, Mullapudi ST, Zhang Y, Hesselson D, Stainier DYR. Thyroid hormone coordinates pancreatic islet maturation during the zebrafish larval-to-juvenile transition to maintain glucose homeostasis. *Diabetes* 2017; 66:2623-2635. DOI: 10.2337/db16-1476
- Mayorca-Guiliani AE, Madsen CD, Cox TR, Horton ER, Venning FA, Erler JT. ISDoT: in situ decellularization of tissues for high-resolution imaging and proteomic analysis of native extracellular matrix. *Nature Medicine* 2017; 23:890-898. DOI: 10.1038/nm.4352
- McBride KA, Ballinger ML, Schlub TE, Young MA, Tattersall MH, Kirk J et al. Psychosocial morbidity in TP53 mutation carriers: is whole-body cancer screening beneficial? *Familial Cancer* 2017; 16:423-432. DOI: 10.1007/s10689-016-9964-7

- McCormack AI, Burt MG. Optimising pituitary surgery outcomes in Australia: how much does size matter? *Internal Medicine Journal* 2017; 47:1225-1227. DOI: 10.1111/imj.13610
- McCusker EA, Loy CT. Huntington disease: the complexities of making and disclosing a clinical diagnosis after premanifest genetic testing. *Tremor and Other Hyperkinetic Movements* 2017; 7:467. DOI: 10.7916/D8PK0TDD
- McDonald MM, Delgado-Calle J. Sclerostin: an emerging target for the treatment of cancer-induced bone disease. *Current Osteoporosis Reports* 2017; 15:532-541. DOI: 10.1007/s11914-017-0403-y
- McDonald MM, Fairfield H, Falank C, Reagan MR. Adipose, bone, and myeloma: contributions from the microenvironment. *Calcified Tissue International* 2017; 100:433-448. DOI: 10.1007/s00223-016-0162-2
- McDonald MM, Reagan MR, Youlten SE, Mohanty ST, Seckinger A, Terry RL et al. Inhibiting the osteocyte-specific protein sclerostin increases bone mass and fracture resistance in multiple myeloma. *Blood* 2017; 129:3452-3464. DOI: 10.1182/blood-2017-03-773341
- McNamara HA, Cai Y, Wagle MV, Sontani Y, Roots CM, Miosge LA et al. Up-regulation of LFA-1 allows liver-resident memory T cells to patrol and remain in the hepatic sinusoids. *Science Immunology* 2017; 2:eaaj1996. DOI: 10.1126/sciimmunol.aaj1996
- McQuerry JA, Chang JT, Bowtell DDL, Cohen A, Bild AH. Mechanisms and clinical implications of tumor heterogeneity and convergence on recurrent phenotypes. *Journal Of Molecular Medicine* 2017; 95:1167-1178. DOI: 10.1007/s00109-017-1587-4
- Meeusen EN, Lim E, Mathivanan S. Secreted tumor antigens – immune biomarkers for diagnosis and therapy. *Proteomics* 2017; 17(23-24). DOI: 10.1002/pmic.201600442
- Milinkeviciute G, Muniak MA, Ryugo DK. Descending projections from the inferior colliculus to the dorsal cochlear nucleus are excitatory. *Journal of Comparative Neurology* 2017; 525:773-793. DOI: 10.1002/cne.24095
- Miller A, McLeod L, Alhayani S, Szczepny A, Watkins DN, Chen W et al. Blockade of the IL-6 trans-signalling/STAT3 axis suppresses cachexia in Kras-induced lung adenocarcinoma. *Oncogene* 2017; 36:3059-3066. DOI: 10.1038/onc.2016.437
- Minlikeeva AN, Freudenheim JL, Eng KH, Cannioto RA, Friel G, Szender JB et al. History of comorbidities and survival of ovarian cancer patients, results from the Ovarian Cancer Association Consortium. *Cancer Epidemiology Biomarkers & Prevention* 2017; 26:1470-1473. DOI: 10.1158/1055-9965.EPI-17-0367
- Miosge LA, Sontani Y, Chuah A, Horikawa K, Russell TA, Mei Y et al. Systems-guided forward genetic screen reveals a critical role of the replication stress response protein ETAA1 in T cell clonal expansion. *Proceedings of The National Academy of Sciences of The United States of America* 2017; 114:E5216-E5225. DOI: 10.1073/pnas.1705795114
- Moens L, Schaballie H, Bosch B, Voet A, Bossuyt X, Casanova JL et al. AD hyper-IgE Syndrome due to a novel loss-of-function mutation in STAT3: a diagnostic pursuit won by clinical acuity. *Journal of Clinical Immunology* 2017; 37:12-17. DOI: 10.1007/s10875-016-0351-9
- Moni MA, Lio P. Genetic profiling and comorbidities of Zika infection. *Journal of Infectious Diseases* 2017; 216:703-712. DOI: 10.1093/infdis/jix327
- Montgomery MK, Brown SHJ, Mitchell TW, Coster ACF, Cooney GJ, Turner N. Association of muscle lipidomic profile with high-fat diet-induced insulin resistance across five mouse strains. *Scientific Reports* 2017; 7:13914. DOI: 10.1038/s41598-017-14214-1
- Moran I, Phan T. Fate mapping and transcript profiling of germinal center cells by two-photon photoconversion. *Methods in Molecular Biology* 2017; 1623:59-72. DOI: 10.1007/978-1-4939-7095-7_5
- Morse A, McDonald MM, Schindeler A, Peacock L, Mikulec K, Cheng TL et al. Sclerostin antibody increases callus size and strength but does not improve fracture union in a challenged open rat fracture model. *Calcified Tissue International* 2017; 101:217-228. DOI: 10.1007/s00223-017-0275-2
- Motterle A. Identification of islet-enriched long non-coding RNAs contributing to β -cell failure in type 2 diabetes. *Molecular Metabolism* 2017; 6:1407-1418. DOI: 10.1016/j.molmet.2017.08.005
- Muir CA, Greenfield JR, MacDonald PS. Empagliflozin in the management of diabetes mellitus after cardiac transplantation. *Journal of Heart And Lung Transplantation* 2017; 36:914-916. DOI: 10.1016/j.healun.2017.05.005
- Muir C, Dodds A, Samaras K. Mid-life extra-haematopoietic manifestations of Diamond-Blackfan anaemia. *Endocrinology, Diabetes & Metabolism Case Reports* 2017; 2017:16-0141. DOI: 10.1530/EDM-16-0141
- Munch J, Grivas D, Gonzalez-Rajal A, Torregrosa-Carrion R, de la Pompa JL. Notch signalling restricts inflammation and serpentine in the dynamic endocardium of the regenerating zebrafish heart. *Development* 2017; 144:1425-1440. DOI: 10.1242/dev.143362
- Mungall CJ, McMurry JA, Kohler S, Balhoff JP, Borromeo C, Brush M et al. The Monarch Initiative: an integrative data and analytic platform connecting phenotypes to genotypes across species. *Nucleic Acids Research* 2017; 45:D712-D722. DOI: 10.1093/nar/gkw1128

- Munoz MA, Jurczyk J, Mehr S, Chai RC, Arts RJW, Sheu A et al. Defective protein prenylation is a diagnostic biomarker of mevalonate kinase deficiency. *Journal of Allergy And Clinical Immunology* 2017; 140:873-875.e6. DOI: 10.1016/j.jaci.2017.02.033
- Nagarajan SR, Brandon AE, McKenna JA, Shtein HC, Nguyen TQ, Suryana E et al. Insulin and diet-induced changes in the ubiquitin-modified proteome of rat liver. *PLoS One* 2017; 12:e0174431. DOI: 10.1371/journal.pone.0174431
- Naidu P, Churilov L, Kong A, Kanaan R, Wong H, Van Mourik A et al. Using routine hemoglobin A1c testing to determine the glycemic status in psychiatric inpatients. *Frontiers in Endocrinology* 2017; 8:53. DOI: 10.3389/fendo.2017.00053
- Nakagawa S, Johnson PCD, Schielzeth H. The coefficient of determination R(2) and intra-class correlation coefficient from generalized linear mixed-effects models revisited and expanded. *Journal of the Royal Society Interface* 2017; 14:20170213. DOI: 10.1098/rsif.2017.0213
- Nakagawa S, Kar F, O'Dea RE, Pick JL, Lagisz M. Divide and conquer? Size adjustment with allometry and intermediate outcomes. *BMC Biology* 2017; 15:107. DOI: 10.1186/s12915-017-0448-5
- Nakagawa S, Noble DW, Senior AM, Lagisz M. Meta-evaluation of meta-analysis: ten appraisal questions for biologists. *BMC Biology* 2017; 15:18. DOI: 10.1186/s12915-017-0357-7
- Nesbitt H, Byrne NM, Williams SN, Ming L, Worthington J, Errington RJ et al. Targeting hypoxic prostate tumors using the novel hypoxia-activated prodrug OCT1002 inhibits expression of genes associated with malignant progression. *Clinical Cancer Research* 2017; 23:1797-1808. DOI: 10.1158/1078-0432.CCR-16-1361
- Newby J, Robins L, Wilhelm K, Smith J, Fletcher T, Gillis I et al. Web-based cognitive behavior therapy for depression in people with diabetes mellitus: a randomized controlled trial. *Journal of Medical Internet Research* 2017; 19:e157. DOI: 10.2196/jmir.7274
- Nguyen TV. Individualized assessment of fracture risk: contribution of "osteogenomic profile". *Journal of Clinical Densitometry* 2017; 20:353-359. DOI: 10.1016/j.jocd.2017.06.021
- Nguyen TV, Eisman JA. Fracture risk assessment: from population to individual. *Journal of Clinical Densitometry* 2017; 20:368-378. DOI: 10.1016/j.jocd.2017.06.023
- Nguyen TV, Ho-Le TP, Le UV. International collaboration in scientific research in Vietnam: an analysis of patterns and impact. *Scientometrics* 2017; 110:1035-1051. DOI: 10.1007/s11192-016-2201-1
- Nikolic I, Elsworth B, Dodson E, Wu SZ, Gould CM, Mestdagh P et al. Discovering cancer vulnerabilities using high-throughput micro-RNA screening. *Nucleic Acids Research* 2017; 45:12657-12670. DOI: 10.1093/nar/gkx1072
- Nobis M, Herrmann D, Warren SC, Kadir S, Leung W, Killen M et al. A RhoA-FRET biosensor mouse for intravital imaging in normal tissue homeostasis and disease contexts. *Cell Reports* 2017; 21:274-288. DOI: 10.1016/j.celrep.2017.09.022
- Noble DWA, Lagisz M, O'Dea R E, Nakagawa S. Nonindependence and sensitivity analyses in ecological and evolutionary meta-analyses. *Molecular Ecology* 2017; 26:2410-2425. DOI: 10.1111/mec.14031
- Novoa EM, Mason CE, Mattick JS. Charting the unknown epitranscriptome. *Nature Reviews Molecular Cell Biology* 2017; 18:339-340. DOI: 10.1038/nrm.2017.49
- O'Leary VB, Smida J, Buske FA, Carrascosa LG, Azimzadeh O, Maugg D et al. PARTICLE triplexes cluster in the tumor suppressor WWOX and may extend throughout the human genome. *Scientific Reports* 2017; 7:7163. DOI: 10.1038/s41598-017-07295-5
- Oakes SR, Gallego-Ortega D, Stanford PM, Junankar S, Au WWY, Kikhtyak Z et al. A mutation in the viral sensor 2'-5'-oligoadenylate synthetase 2 causes failure of lactation. *PLoS Genetics* 2017; 13:e1007072. DOI: 10.1371/journal.pgen.1007072
- Ovarian Tumor Tissue Analysis Consortium, Goode EL, Block MS, Kalli KR, Vierkant RA, Chen W et al. Dose-response association of CD8+ tumor-infiltrating lymphocytes and survival time in high-grade serous ovarian cancer. *JAMA Oncology* 2017; 3:e173290. DOI: 10.1001/jamaoncol.2017.3290
- Pajic M, Blatter S, Guyader C, Gonggrijp M, Kersbergen A, Kucukosmanoglu A et al. Selected alkylating agents can overcome drug tolerance of G0-like tumor cells and eradicate BRCA1-deficient mammary tumors in mice. *Clinical Cancer Research* 2017; 23:7020-7033. DOI: 10.1158/1078-0432.CCR-17-1279
- Pang JB, Molania R, Chand A, Knowler K, Takano EA, Byrne DJ et al. LRH-1 expression patterns in breast cancer tissues are associated with tumour aggressiveness. *Oncotarget* 2017; 8:83626-83636. DOI: 10.18632/oncotarget.18886
- Pang JB, Savas P, Fellowes AP, Mir Arnau G, Kader T, Vedururu R et al. Breast ductal carcinoma in situ carry mutational driver events representative of invasive breast cancer. *Modern Pathology* 2017; 30:952-963. DOI: 10.1038/modpathol.2017.21
- Peinado H, Zhang H, Matei IR, Costa-Silva B, Hoshino A, Rodrigues G et al. Pre-metastatic niches: organ-specific homes for metastases. *Nature Reviews Cancer* 2017; 17:302-317. DOI: 10.1038/nrc.2017.6

- Peng G, Bojadzieva J, Ballinger ML, Li J, Blackford AL, Mai PL et al. Estimating TP53 mutation carrier probability in families with Li-Fraumeni syndrome using LFSPRO. *Cancer Epidemiology Biomarkers & Prevention* 2017; 26:837-844. DOI: 10.1158/1055-9965.EPI-16-0695
- Peng V, Suchowerska N, Rogers L, Claridge Mackonis E, Oakes S, McKenzie DR. Grid therapy using high definition multileaf collimators: realizing benefits of the bystander effect. *ACTA Oncologica* 2017; 56:1048-1059. DOI: 10.1080/0284186X.2017.1299939
- Perdigao N, Rosa AC, O'Donoghue SI. The Dark Proteome Database. *BioData Mining* 2017; 10:24. DOI: 10.1186/s13040-017-0144-6
- Petersons CJ, Mangelsdorf BL, et al. Low dose prednisolone and insulin sensitivity differentially affect arterial stiffness and endothelial function: An open interventional and cross-sectional study. *Atherosclerosis* 2017; 258:34-39. DOI: 10.1016/j.atherosclerosis.2017.01.033
- Pham HM, Nguyen SC, Ho-Le TP, Center JR, Eisman JA, Nguyen TV. Association of muscle weakness with post-fracture mortality in older men and women: a 25-year prospective study. *Journal of Bone and Mineral Research* 2017; 32:698-707. DOI: 10.1002/jbmr.3037
- Phan TG, Tangye SG. Memory B cells: total recall. *Current Opinion in Immunology* 2017; 45:130-140. DOI: 10.1016/j.coi.2017.03.005
- Phelan CM, Kuchenbaecker KB, Tyrer JP, Kar SP, Lawrenson K, Winham SJ et al. Identification of 12 new susceptibility loci for different histotypes of epithelial ovarian cancer. *Nature Genetics* 2017; 49:680-691. DOI: 10.1038/ng.3826
- Pickett JL, Chou A, Andrici JA, Clarkson A, Sioson L, Sheen A et al. Inflammatory myofibroblastic tumors of the female genital tract are under-recognized: a low threshold for ALK immunohistochemistry is required. *American Journal of Surgical Pathology* 2017; 41:1433-1442. DOI: 10.1097/PAS.0000000000000909
- Pocock N. Use of dual energy X-ray absorptiometry, the trabecular bone score and quantitative computed tomography in the evaluation of chronic kidney disease-mineral and bone disorders. *Nephrology* 2017; 22 Suppl 2:19-21. DOI: 10.1111/nep.13016
- Pourteymour S, Eckardt K, Holen T, Langleite T, Lee S, Jensen J et al. Global mRNA sequencing of human skeletal muscle: Search for novel exercise-regulated myokines. *Molecular Metabolism* 2017; 6:352-365. DOI: 10.1016/j.molmet.2017.01.007
- Pourteymour S, Hjorth M, Lee S, Holen T, Langleite TM, Jensen J et al. Dual specificity phosphatase 5 and 6 are oppositely regulated in human skeletal muscle by acute exercise. *Physiological Reports* 2017; 5:e13459. DOI: 10.14814/phy2.13459
- Praestegaard C, Jensen A, Jensen SM, Nielsen TS, Webb PM, Nagle CM et al. Cigarette smoking is associated with adverse survival among women with ovarian cancer: results from a pooled analysis of 19 studies. *International Journal of Cancer* 2017; 140:2422-2435. DOI: 10.1002/ijc.30600
- Proudfoot J, Clarke J, Gunn J, Fletcher S, Sanatkar S, Wilhelm K et al. A web-based public health intervention to reduce functional impairment and depressive symptoms in adults with type 2 diabetes (The Springboard Trial): randomized controlled trial protocol. *JMIR Research Protocols* 2017; 6:e145. DOI: 10.2196/resprot.7348
- Purtell L, Qi Y, Campbell L, Sainsbury A, Herzog H. Adult-onset deletion of the Prader-Willi syndrome susceptibility gene Snord116 in mice results in reduced feeding and increased fat mass. *Translational Pediatrics* 2017; 6:88-97. DOI: 10.21037/tp.2017.03.06
- Puts MT, Sattar S, McWatters K, Lee K, Kulik M, MacDonald ME et al. Chemotherapy treatment decision-making experiences of older adults with cancer, their family members, oncologists and family physicians: a mixed methods study. *Supportive Care in Cancer* 2017; 25:879-886. DOI: 10.1007/s00520-016-3476-8
- Qi Y, Purtell L, Fu M, Zhang L, Zolotukhin S, Campbell L, Herzog H. Hypothalamus specific re-introduction of Snord116 into otherwise Snord116 deficient mice increased energy expenditure. *Journal of Neuroendocrinology* 2017; 29. DOI: 10.1111/jne.12457
- Qi Y, Purtell L, Fu M, Sengmany K, Loh K, Zhang L et al. Ambient temperature modulates the effects of the Prader-Willi syndrome candidate gene Snord116 on energy homeostasis. *Neuropeptides* 2017; 61:87-93. DOI: 10.1016/j.npep.2016.10.006
- Ramialison M, Waardenberg AJ, Schonrock N, Doan T, de Jong D, Bouveret R, Harvey RP. Analysis of steric effects in DamID profiling of transcription factor target genes. *Genomics* 2017; 109:75-82. DOI: 10.1016/j.ygeno.2017.01.006
- Rath N, Morton JP, Julian L, Helbig L, Kadir S, McGhee EJ et al. ROCK signaling promotes collagen remodeling to facilitate invasive pancreatic ductal adenocarcinoma tumor cell growth. *EMBO Molecular Medicine* 2017; 9:198-218. DOI: 10.15252/emmm.201606743
- Reed JH, Gorny MK, Li L, Cardozo T, Buyon JP, Clancy RM. Ro52 autoantibodies arise from self-reactive progenitors in a mother of a child with neonatal lupus. *Journal of Autoimmunity* 2017; 79:99-104. DOI: 10.1016/j.jaut.2017.01.004

- Reibe-Pal S, Febbraio MA. Adiponectin serenades ceramidase to improve metabolism. *Molecular Metabolism* 2017; 6:233-235. DOI: 10.1016/j.molmet.2017.01.011
- Riley LG, Cowley MJ, Gayevskiy V, Roscioli T, Thorburn DR, Prelog K et al. A SLC39A8 variant causes manganese deficiency, and glycosylation and mitochondrial disorders. *Journal of Inherited Metabolic Disease* 2017; 40:261-269. DOI: 10.1007/s10545-016-0010-6
- Rojas-Canales D, Penko D, Myo Min KK, Parham KA, Peiris H, Haberberger RV et al. Local sphingosine kinase 1 activity improves islet transplantation. *Diabetes* 2017; 66:1301-1311. DOI: 10.2337/db16-0837
- Rouet R, Langley DB, Schofield P, Christie M, Roome B, Porebski BT et al. Structural reconstruction of protein ancestry. *Proceedings of The National Academy of Sciences of The United States of America* 2017; 114:3897-3902. DOI: 10.1073/pnas.1613477114
- Rusu M, Purysko AS, Verma S, Kiechle J, Gollamudi J, Ghose S et al. Computational imaging reveals shape differences between normal and malignant prostates on MRI. *Scientific Reports* 2017; 7:41261. DOI: 10.1038/srep41261
- Samimi G, Bernardini MQ, Brody LC, Caga-Anan CF, Campbell IG, Chenevix-Trench G et al. Traceback: A proposed framework to increase identification and genetic counseling of BRCA1 and BRCA2 mutation carriers through family-based outreach. *Journal of Clinical Oncology* 2017; 35:2329-2337. DOI: 10.1200/JCO.2016.70.3439
- Scarpa A, Chang DK, Nones K, Corbo V, Patch AM, Bailey P et al. Whole-genome landscape of pancreatic neuroendocrine tumours. *Nature* 2017; 543:65-71. DOI: 10.1038/nature21063
- Scheltema MJ, van den Bos W, Siriwardana AR, Kalsbeek AMF, Thompson JE, Ting F et al. Feasibility and safety of focal irreversible electroporation as salvage treatment for localized radio-recurrent prostate cancer. *BJU International* 2017; 120:51-58. DOI: 10.1111/bju.13991
- Schofield D, Alam K, Douglas L, Shrestha R, MacArthur DG, Davis M et al. Cost-effectiveness of massively parallel sequencing for diagnosis of paediatric muscle diseases. *NPJ Genomic Medicine* 2017; 2. DOI: 10.1038/s41525-017-0006-7
- Schofield D, Shrestha RN, Cunich MM, Passey ME, Veerman L, Tanton R, Kelly SJ. The costs of diabetes among Australians aged 45-64 years from 2015 to 2030: projections of lost productive life years (PLYs), lost personal income, lost taxation revenue, extra welfare payments and lost gross domestic product from Health&WealthMOD2030. *BMJ Open* 2017; 7:e013158. DOI: 10.1136/bmjopen-2016-013158
- Scott CH, Cha KM, Ngai J, Jiang C, Cheng K, Stokes RA et al. Hepatic Aryl hydrocarbon Receptor Nuclear Translocator (ARNT) regulates metabolism in mice. *PLoS One* 2017; 12:e0186543. DOI: 10.1371/journal.pone.0186543
- Selinger CI, Li BT, Pavlakis N, Links M, Gill AJ, Lee A et al. Screening for ROS1 gene rearrangements in non-small-cell lung cancers using immunohistochemistry with FISH confirmation is an effective method to identify this rare target. *Histopathology* 2017; 70:402-411. DOI: 10.1111/his.13076
- Seow J, Morales R, MacRaid CA, Krishnarjuna B, McGowan S, Dingjan T et al. Structure and characterisation of a key epitope in the conserved C-terminal domain of the malaria vaccine candidate MSP2. *Journal of Molecular Biology* 2017; 429:836-846. DOI: 10.1016/j.jmb.2017.02.003
- Shakya R, Tarulli GA, Sheng L, Lokman NA, Ricciardelli C, Pishas KI et al. Mutant p53 upregulates alpha-1 antitrypsin expression and promotes invasion in lung cancer. *Oncogene* 2017; 36:4469-4480. DOI: 10.1038/onc.2017.66
- Sharbeen G, Youkhana J, Mawson A, McCarroll J, Nunez A, Biankin A et al. MutY-Homolog (MYH) inhibition reduces pancreatic cancer cell growth and increases chemosensitivity. *Oncotarget* 2017; 8:9216-9229. DOI: 10.18632/oncotarget.13985
- Sheriff N, McCormack AI. How useful is urinary-free cortisol in the clinic? *Biomarkers in Medicine* 2017; 11:1009-1016. DOI: 10.2217/bmm-2016-0311
- Sheu A, Center J. Osteoporosis in postmenopausal women: key aspects of prevention and treatment. *Medicine Today* 2017; 18:29-38.
- Sheu A, Lopes LBA, Eisman J, Center JR. Osteoporosis management in 2017: still thin and fragmented. *Internal Medicine Journal* 2017; 47:1329-1330. DOI: 10.1111/imj.13598
- Shi YC, Ip CK, Reed F, Sarruf DA, Wulff BS, Herzog H. Y5 receptor signalling counteracts the anorectic effects of PYY3-36 in diet-induced obese mice. *J Neuroendocrinology* 2017; 29:e12483. DOI: 10.1111/jne.12483
- Siow SF, Kumar KR. New gene implicated in early-onset generalized dystonia: Lysine-specific methyltransferase 2B (KMT2B). *Movement Disorders* 2017; 32:395. DOI: 10.1002/mds.26928
- Siriwardana A, Thompson J, Stricker P. Personalising prostate cancer care part 1: advances in diagnosis. *Medicine Today* 2017; 18:29-32.
- Siriwardana A, Thompson J, Stricker P. Personalising prostate cancer care part 2: current treatment options. *Medicine Today* 2017; 18:28-33.

- Siriwardana A, Thompson J, van Leeuwen PJ, Doig S, Kalsbeek A, Emmett L et al. Initial multicentre experience of 68 gallium-PSMA PET/CT guided robot-assisted salvage lymphadenectomy: acceptable safety profile but oncological benefit appears limited. *BJU International* 2017; 120:673-681. DOI: 10.1111/bju.13919
- Sivanathan KN, Gronthos S, Grey ST, Rojas-Canales D, Coates PT. Immunodepletion and hypoxia preconditioning of mouse compact bone cells as a novel protocol to isolate highly immunosuppressive mesenchymal stem cells. *Stem Cells* 2017; 26:512-527. DOI: 10.1089/scd.2016.0180
- Sivanathan KN, Rojas-Canales D, Grey ST, Gronthos S, Coates PT. Transcriptome profiling of IL-17A preactivated mesenchymal stem cells: a comparative study to unmodified and IFN- γ modified mesenchymal stem cells. *Stem Cells International* 2017; 2017:1025820. DOI: 10.1155/2017/1025820
- Skhinas JN, Cox TR. The interplay between extracellular matrix remodelling and kinase signalling in cancer progression and metastasis. *Cell Adhesion & Migration* 2017; DOI: 10.1080/19336918.2017.1405208
- Skoglund P, Thompson JC, Prendergast ME, Mitnik A, Sirak K, Hajdinjak M et al. Reconstructing Prehistoric African Population Structure. *Cell* 2017; 171:59-71 e21. DOI: 10.1016/j.cell.2017.08.049
- Skvortsova K, Zotenko E, Luu PL, Gould CM, Nair SS, Clark SJ, Stirzaker C. Comprehensive evaluation of genome-wide 5-hydroxymethylcytosine profiling approaches in human DNA. *Epigenetics & Chromatin* 2017; 10:16. DOI: 10.1186/s13072-017-0123-7
- Smith MA, Mattick JS. Structural and functional annotation of long noncoding RNAs. *Methods in Molecular Biology* 2017; 1526:65-85. DOI: 10.1007/978-1-4939-6613-4_4
- Smith MA, Seemann SE, Quek XC, Mattick JS. DotAligner: identification and clustering of RNA structure motifs. *Genome Biology* 2017; 18:244. DOI: 10.1186/s13059-017-1371-3
- Sobreira NLM, Arachchi H, Buske OJ, Chong JX, Hutton B, Foreman J et al. Matchmaker Exchange. *Current Protocols in Human Genetics* 2017; 95:9.31.1-9.31.15. DOI: 10.1002/cphg.50
- Sprent J. T cell-B cell collaboration. *Nature Reviews Immunology* 2017; 17:532. DOI: 10.1038/nri.2017.62
- Sprent J, Surh CD. Writer's block: preventing m(6)A mRNA methylation promotes T cell naivety. *Immunology and Cell Biology* 2017; 95:855-856. DOI: 10.1038/icb.2017.67
- Stark Z, Schofield D, Alam K, Wilson W, Mupfeki N, Macciocca I et al. Prospective comparison of the cost-effectiveness of clinical whole-exome sequencing with that of usual care overwhelmingly supports early use and reimbursement. *Genetics in Medicine* 2017; 19:867-874. DOI: 10.1038/gim.2016.221
- Stayte S, Rentsch P, Troscher AR, Bamberger M, Li KM, Vissel B. Activin A inhibits MPTP and LPS-induced increases in inflammatory cell populations and loss of dopamine neurons in the mouse midbrain in vivo. *PLoS One* 2017; 12:e0167211. DOI: 10.1371/journal.pone.0167211
- Stirzaker C, Song JZ, Ng W, Du Q, Armstrong NJ, Locke WJ et al. Methyl-CpG-binding protein MBD2 plays a key role in maintenance and spread of DNA methylation at CpG islands and shores in cancer. *Oncogene* 2017; 36:1328-1338. DOI: 10.1038/onc.2016.297
- Stockli J, Fisher-Wellman KH, Chaudhuri R, Zeng XY, Fazakerley DJ, Meoli CC et al. Metabolomic analysis of insulin resistance across different mouse strains and diets. *Journal of Biological Chemistry* 2017; 292:19135-19145. DOI: 10.1074/jbc.M117.818351
- Stodell M, Thompson JF, Emmett L, Uren RF, Kapoor R, Saw RPM. Melanoma patient imaging in the era of effective systemic therapies. *European Journal of Surgical Oncology* 2017; 43:1517-1527. DOI: 10.1016/j.ejso.2017.05.014
- Stokes RA, Cheng K, Lalwani A, Swarbrick MM, Thomas HE, Loudovaris T et al. Transplantation sites for human and murine islets. *Diabetologia* 2017; 60:1961-1971. DOI: 10.1007/s00125-017-4362-8
- Stokes RA, Simond DM, Burns H, Patel AT, O'Connell PJ, Gunton JE, Hawthorne WJ. Transplantation sites for porcine islets. *Diabetologia* 2017; 60:1972-1976. DOI: 10.1007/s00125-017-4363-7
- Suan D, Krautler NJ, Maag JLV, Butt D, Bourne K, Hermes JR et al. CCR6 defines memory B cell precursors in mouse and human germinal centers revealing light zone location and predominant low antigen affinity. *Immunity* 2017; 47:1142-1153. DOI: 10.1016/j.immuni.2017.11.022
- Suan D, Sundling C, Brink R. Plasma cell and memory B cell differentiation from the germinal center. *Current Opinion in Immunology* 2017; 45:97-102. DOI: 10.1016/j.coi.2017.03.006
- Sucheston-Campbell LE, Cannioto R, Clay AI, Etter JL, Eng KH, Liu S et al. No evidence that genetic variation in the myeloid-derived suppressor cell pathway influences ovarian cancer survival. *Cancer Epidemiology Biomarkers & Prevention* 2017; 26:420-424. DOI: 10.1158/1055-9965.EPI-16-0631
- Sun WW, Li LY, Huang XF, Shi YC, Yang HQ, Song ZY, Lin S. The central mechanism of risperidone-induced hyperprolactinemia. *Progress in Neuro-Psychopharmacology & Biological Psychiatry* 2017; 76:134-139. DOI: 10.1016/j.pnpbp.2017.03.009

- Sun WW, Zhu P, Shi YC, Zhang CL, Huang XF, Liang SY et al. Current views on neuropeptide Y and diabetes-related atherosclerosis. *Diabetes and Vascular Disease Research* 2017; 14:277-284. DOI: 10.1177/1479164117704380
- Suthakar K, Ryugo DK. Descending projections from the inferior colliculus to medial olivocochlear efferents: Mice with normal hearing, early onset hearing loss, and congenital deafness. *Hearing Research* 2017; 343:34-49. DOI: 10.1016/j.heares.2016.06.014
- Szczepny A, Rogers S, Jayasekara WSN, Park K, McCloy RA, Cochrane CR et al. The role of canonical and non-canonical Hedgehog signaling in tumor progression in a mouse model of small cell lung cancer. *Oncogene* 2017; 36:5544-5550. DOI: 10.1038/onc.2017.173
- Takeda K, Nakayama M, Hayakawa Y, Kojima Y, Ikeda H, Imai N et al. IFN-gamma is required for cytotoxic T cell-dependent cancer genome immunoediting. *Nature Communications* 2017; 8:14607. DOI: 10.1038/ncomms14607
- Tam CS, Chaudhuri R, Hutchison AT, Samocho-Bonet D, Heilbronn LK. Skeletal muscle extracellular matrix remodeling after short-term overfeeding in healthy humans. *Metabolism: Clinical and Experimental* 2017; 67:26-30. DOI: 10.1016/j.metabol.2016.10.009
- Tan E, Lin F, Sheck L, Salmon P, Ng S. A practical decision-tree model to predict complexity of reconstructive surgery after periocular basal cell carcinoma excision. *Journal of The European Academy of Dermatology and Venereology* 2017; 31:717-723. DOI: 10.1111/jdv.14012
- Tan SH, Lee A, Pascovici D, Care N, Birzniece V, Ho K et al. Plasma biomarker proteins for detection of human growth hormone administration in athletes. *Scientific Reports* 2017; 7:10039. DOI: 10.1038/s41598-017-09968-7
- Tan TY, Dillon OJ, Stark Z, Schofield D, Alam K, Shrestha R et al. Diagnostic Impact and Cost-effectiveness of Whole-Exome Sequencing for Ambulant Children With Suspected Monogenic Conditions. *JAMA Pediatrics* 2017; 171:855-862. DOI: 10.1001/jamapediatrics.2017.1755
- Tan Z, Cheng J, Liu Q, Zhou L, Kenny J, Wang T et al. Neohesperidin suppresses osteoclast differentiation, bone resorption and ovariectomised-induced osteoporosis in mice. *Molecular and Cellular Endocrinology* 2017; 439:369-378. DOI: 10.1016/j.mce.2016.09.026
- Tang Y, Cheung BB, Atmadibrata B, Marshall GM, Dinger ME, Liu PY, Liu T. The regulatory role of long noncoding RNAs in cancer. *Cancer Letters* 2017; 391:12-19. DOI: 10.1016/j.canlet.2017.01.010
- Tangye SG, Forbes LR, Leiding J, Preece K, Kumar AR, Gambineri E et al. Low IgE Is Insufficiently Sensitive to Guide Genetic Testing of STAT3 Gain-of-Function Mutations. *Clinical Chemistry* 2017; 63:1539-1540. DOI: 10.1373/clinchem.2017.273458
- Tangye SG, Pelham SJ, Deenick EK, Ma CS. Cytokine-mediated regulation of human lymphocyte development and function: insights from primary immunodeficiencies. *Journal of Immunology* 2017; 199:1949-1958. DOI: 10.4049/jimmunol.1700842
- Tangye SG. Pathogenic CD4+ T cells regulating B-cell differentiation in autoimmunity: not exactly Tfh cells. *Immunology and Cell Biology* 2017; 95:419-421. DOI: 10.1038/icb.2017.20
- Tangye SG, Pillay B, Randall L, Avery DT, Phan TG, Gray P et al. Deducator of cytokines 8-deficient CD4+ T cells are biased to a TH2 effector fate at the expense of TH1 and TH17 cells. *Journal of Allergy and Clinical Immunology* 2017; 139:933-949. DOI: 10.1016/j.jaci.2016.07.016
- Tangye SG, Palendira U, Edwards ES. Human immunity against EBV—lessons from the clinic. *Journal of Experimental Medicine* 2017; 214:269-283. DOI: 10.1084/jem.20161846
- Teasdale SB, Samaras K, Wade T, Jarman R, Ward PB. A review of the nutritional challenges experienced by people living with severe mental illness: a role for dietitians in addressing physical health gaps. *Journal of Human Nutrition And Dietetics* 2017; 30:545-553. DOI: 10.1111/jhn.12473
- Teasdale SB, Ward PB, Rosenbaum S, Samaras K, Stubbs B. Solving a weighty problem: systematic review and meta-analysis of nutrition interventions in severe mental illness. *British Journal of Psychiatry* 2017; 210:110-118. DOI: 10.1192/bjp.bp.115.177139
- Teasdale SB, Ward PB, Samaras K. Dietary intervention in the dystopian world of severe mental illness: measure for measure, then manage. *ACTA Psychiatrica Scandinavica* 2017; 135:180. DOI: 10.1111/acps.12670
- Thapa B, Salcedo A, Lin X, Walkiewicz M, Murone C, Ameratunga M et al. The immune microenvironment, genome-wide copy number aberrations, and survival in mesothelioma. *Journal of Thoracic Oncology* 2017; 12:850-859. DOI: 10.1016/j.jtho.2017.02.013
- Thomas DM. Is Li-Fraumeni syndrome really much more common? *Human Mutation* 2017; 38:1619. DOI: 10.1002/humu.23342
- Thomas DM, Whelan J. Bone sarcomas in the adolescent and young adult population. *Pediatric Oncology* 2017; 417-427. DOI: 10.1007/978-3-319-33679-4_16
- Thompson JE, Stricker PD. Diagnostic accuracy of multi-parametric MRI and transrectal ultrasound-guided biopsy in prostate cancer. *The Lancet* 2017; 389:767-768. DOI: 10.1016/S0140-6736(17)30121-6
- Tonks KT, White CP, Center JR, Samocho-Bonet D, Greenfield JR. Bone turnover is suppressed in insulin resistance, independent of adiposity. *Journal of Clinical Endocrinology & Metabolism* 2017; 102:1112-1121. DOI: 10.1210/jc.2016-3282

- Torcellan T, Hampton HR, Bailey J, Tomura M, Brink R, Chtanova T. In vivo photolabeling of tumor-infiltrating cells reveals highly regulated egress of T-cell subsets from tumors. *Proceedings of The National Academy of Sciences of The United States of America* 2017; 144:5677-5682. DOI: 10.1073/pnas.1618446114
- Torcellan T, Stolp J, Chtanova T. In vivo imaging sheds light on immune cell migration and function in cancer. *Frontiers in Immunology* 2017; 8:309. DOI: 10.3389/fimmu.2017.00309
- Tran DN, Smith SA, Brown DA, Parker AJ, Joseph JE, Armstrong N, Sewell WA. Polychromatic flow cytometry is more sensitive than microscopy in detecting small monoclonal plasma cell populations. *Cytometry* 2017; 92:136-144. DOI: 10.1002/cyto.b.21401
- Tran GM, Ho-Le TP, Ha DT, Tran-Nguyen CH, Nguyen TSM, Pham TTN et al. Patterns of antimicrobial resistance in intensive care unit patients: a study in Vietnam. *BMC Infectious Diseases* 2017; 17:429. DOI: 10.1186/s12879-017-2529-z
- Tran T, Bliuc D, van Geel T, Adachi JD, Berger C, van den Bergh J et al. Population-wide impact of non-hip non-vertebral fractures on mortality. *Journal of Bone and Mineral Research* 2017; 32:1802-1810. DOI: 10.1002/jbmr.3118
- Tricarico R, Kasela M, Mareni C, Thompson BA, Drouet A, Staderini L et al. Assessment of the InSiGHT interpretation criteria for the clinical classification of 24 MLH1 and MSH2 gene variants. *Human Mutation* 2017; 38:64-77. DOI: 10.1002/humu.23117
- Tripathi SC, Fahrman JF, Celiktas M, Aguilar M, Marini KD, Jolly MK et al. MCAM mediates chemoresistance in small cell lung cancer via the PI3K/AKT/SOX2 signaling pathway. *Cancer Research* 2017; 77:4414-4425. DOI: 10.1158/0008-5472.CAN-16-2874
- Tuan T. Air pollution: a largely neglected risk factor for osteoporosis. *The Lancet Planetary Health* 2017; 1:e311-e312. DOI: 10.1016/S2542-5196(17)30143-2
- Valdes-Mora F, Gould CM, Colino-Sanguino Y, Qu W, Song JZ, Taylor KM et al. Acetylated histone variant H2A.Z is involved in the activation of neo-enhancers in prostate cancer. *Nature Communications* 2017; 8:1346. DOI: 10.1038/s41467-017-01393-8
- Valdes-Mora F, Locke WJ, Bandres E, Gallego-Ortega D, Cejas P, Garcia-Cabezas MA et al. Clinical relevance of the transcriptional signature regulated by CDC42 in colorectal cancer. *Oncotarget* 2017; 8:26755-26770. DOI: 10.18632/oncotarget.15815
- Vallejo A, Perurena N, Guruceaga E, Mazur PK, Martinez-Canarias S, Zanduetta C et al. An integrative approach unveils FOSL1 as an oncogene vulnerability in KRAS-driven lung and pancreatic cancer. *Nature Communications* 2017; 8:14294. DOI: 10.1038/ncomms14294
- van Leeuwen PJ, Emmett L, Ho B, Delprado W, Ting F, Nguyen Q, Stricker PD. Prospective evaluation of 68Gallium-prostate-specific membrane antigen positron emission tomography/computed tomography for preoperative lymph node staging in prostate cancer. *BJU International* 2017; 119:209-215. DOI: 10.1111/bju.13540
- van Leeuwen PJ, Hayen A, Thompson JE, Moses D, Shnier R, Bohm M et al. A multiparametric magnetic resonance imaging-based risk model to determine the risk of significant prostate cancer prior to biopsy. *BJU International* 2017; 120:774-781. DOI: 10.1111/bju.13814
- Vandyke K, Zeissig MN, Hewett DR, Martin SK, Mrozik KM, Cheong CM et al. HIF-2 α promotes dissemination of plasma cells in multiple myeloma by regulating CXCL12/CXCR4 and CCR1. *Cancer Research* 2017; 77:5452-5463. DOI: 10.1158/0008-5472.CAN-17-0115
- Vazquez-Lombardi R, Loetsch C, Zinkl D, Jackson J, Schofield P, Deenick EK et al. Potent antitumor activity of IL-2-Fc fusion proteins requires Fc-mediated depletion of regulatory T-cells. *Nature Communications* 2017; 8:15373. DOI: 10.1038/ncomms15373
- Vennin C, Chin VT, Warren SC, Lucas MC, Herrmann D, Magenau A et al. Transient tissue priming via ROCK inhibition uncouples pancreatic cancer progression, sensitivity to chemotherapy, and metastasis. *Science Translational Medicine* 2017; 9:eaai8504. DOI: 10.1126/scitranslmed.aai8504
- Vennin C, Cox TR, Pajic M, Timpson P. Transient targeting of the pancreatic cancer stroma as a 'fine-tuned' anti-tumor and anti-metastatic therapy. *Oncotarget* 2017; 8:84635-84636. DOI: 10.18632/oncotarget.21468
- Viana J, Hannon E, Dempster E, Pidsley R, Macdonald R, Knox O et al. Schizophrenia-associated methylomic variation: molecular signatures of disease and polygenic risk burden across multiple brain regions. *Human Molecular Genetics* 2017; 26:210-225. DOI: 10.1093/hmg/ddw373
- Villa M, Gialitakis M, Tolaini M1, Ahlfors H, Henderson CJ, Wolf CR et al. Aryl hydrocarbon receptor is required for optimal B-cell proliferation. *EMBO Journal* 2017; 36:116-128. DOI: 10.15252/embj.201695027
- Villanueva JE, Walters SN, Saito M, Malle EK, Zammit NW, Watson KA et al. Targeted deletion of Traf2 allows immunosuppression-free islet allograft survival in mice. *Diabetologia* 2017; 60:679-689. DOI: 10.1007/s00125-016-4198-7
- Vulinovic F, Schaake S, Domingo A, Kumar KR, Defazio G, Mir P et al. Screening study of TUBB4A in isolated dystonia. *Parkinsonism and Related Disorders* 2017; 41:118-120. DOI: 10.1016/j.parkreldis.2017.06.001

- Wang D, Opperhuizen AL, Reznick J, Turner N, Su Y, Cooney GJ, Kalsbeek A. Effects of feeding time on daily rhythms of neuropeptide and clock gene expression in the rat hypothalamus. *Brain Research* 2017; 1671:93-101. DOI: 10.1016/j.brainres.2017.07.006
- Wang JQ, Jeelall YS, Humburg P, Batchelor EL, Kaya SM, Yoo HM et al. Synergistic cooperation and crosstalk between MYD88L265P and mutations that dysregulate CD79B and surface IgM. *Scientific Reports* 2017; 214:2759-2776. DOI: 10.1084/jem.20161454
- Wang QP, Simpson SJ, Herzog H, Neely GG. Chronic sucralose or l-glucose ingestion does not suppress food intake. *Cell Metabolism* 2017; 26:279-280. DOI: 10.1016/j.cmet.2017.07.002
- Ward PB, Firth J, Rosenbaum S, Samaras K, Stubbs B, Curtis J. Lifestyle interventions to reduce premature mortality in schizophrenia. *The Lancet* 2017; 4:e14. DOI: 10.1016/S2215-0366(17)30235-3
- Warton K, Yuwono NL, Cowley MJ, McCabe MJ, So A, Ford CE. Evaluation of Streck BCT and PAXgene stabilised blood collection tubes for cell-free circulating DNA studies in plasma. *Molecular Diagnosis & Therapy* 2017; 21:563-570. DOI: 10.1007/s40291-017-0284-x
- Watson CT, Matsen FATH, Jackson KJL, Bashir A, Smith ML, Glanville J et al. Comment on "A Database of Human Immune Receptor Alleles Recovered from Population Sequencing Data". *Journal of Immunology* 2017; 198:3371-3373. DOI: 10.4049/jimmunol.1700306
- Weinberg F, Reischmann N, Fauth L, Taromi S, Mastroianni J, Kohler M et al. The atypical kinase R1OK1 promotes tumor growth and invasive behavior. *EBioMedicine* 2017; 20:79-97. DOI: 10.1016/j.ebiom.2017.04.015
- Willis AM, Smith SK, Meiser B, Ballinger ML, Thomas DM, Young MA. Sociodemographic, psychosocial and clinical factors associated with uptake of genetic counseling for hereditary cancer: a systematic review. *Clinical Genetics* 2017; 92:121-133. DOI: 10.1111/cge.12868
- Wolf D, Bukosza N, Engel D, Poggi M, Jehle F, Anto Michel N et al. Inflammation, but not recruitment, of adipose tissue macrophages requires signalling through Mac-1 (CD11b/CD18) in diet-induced obesity (DIO). *Thrombosis and Haemostasis* 2017; 117:325-338. DOI: 10.1160/TH16-07-0553
- Wong T, Deveson IW, Hardwick SA, Mercer TR. ANAQUIN: a software toolkit for the analysis of spike-in controls for next generation sequencing. *Bioinformatics* 2017; 33:1723-1724. DOI: 10.1093/bioinformatics/btx038
- Worton LE, Shi YC, Smith EJ, Barry SC, Gonda TJ, Whitehead JP, Gardiner EM. Ectodermal-Neural Cortex 1 Isoforms Have Contrasting Effects on MC3T3-E1 Osteoblast Mineralization and Gene Expression. *Journal of Cellular Biochemistry* 2017; 118:2141-2150. DOI: 10.1002/jcb.25851
- Yanes T, Meiser B, Young MA, Kaur R, Mitchell G, Barlow-Stewart K et al. Psychosocial and behavioral impact of breast cancer risk assessed by testing for common risk variants: protocol of a prospective study. *BMC Cancer* 2017; 17:491. DOI: 10.1186/s12885-017-3485-0
- Yang WL, Gentry-Maharaj A, Simmons A, Ryan A, Fourkala EO, Lu Z et al. Elevation of TP53 autoantibody before CA125 in preclinical invasive epithelial ovarian cancer. *Clinical Cancer Research* 2017; 23:5912-5922. DOI: 10.1158/1078-0432.CCR-17-0284
- Zenk F, Loeser E, Schiavo R, Kilpert F, Bogdanovic O, Iovino N. Germ line-inherited H3K27me3 restricts enhancer function during maternal-to-zygotic transition. *Science* 2017; 357:212-216. DOI: 10.1126/science.aam5339
- Zeraati M, Moye AL, Wong JW, Perera D, Cowley MJ, Christ DU et al. Cancer-associated noncoding mutations affect RNA G-quadruplex-mediated regulation of gene expression. *Scientific Reports* 2017; 7:708. DOI: 10.1038/s41598-017-00739-y
- Zhang AY, Grogan JS, Mahon KL, Rasiah K, Sved P, Eisinger DR et al. A prospective multi-centre Phase III validation study of AZGP1 as a biomarker in localised prostate cancer. *Annals of Oncology* 2017; 28:1903-1909. DOI: 10.1093/annonc/mdx247
- Zhang Y, Nguyen DT, Olzomer EM, Poon GP, Cole NJ, Puvanendran A et al. Rescue of Pink1 deficiency by stress-dependent activation of autophagy. *Cell Chemical Biology* 2017; 24:471-480.e4. DOI: 10.1016/j.chembiol.2017.03.005
- Zhang Y, Zhang SW, Khandekar N, Tong SF, Yang HQ, Wang WR et al. Reduced serum levels of oestradiol and brain derived neurotrophic factor in both diabetic women and HFD-feeding female mice. *Endocrine* 2017; 56:65-72. DOI: 10.1007/s12020-016-1197-x
- Zhao X, Howell KA, He S, Brannan JM, Wec AZ, Davidson E et al. Immunization-elicited broadly protective antibody reveals ebolavirus fusion loop as a site of vulnerability. *Cell* 2017; 169:891-904.e15. DOI: 10.1016/j.cell.2017.04.038
- Zheng Z, Reichel M, Deveson I, Wong G, Li J, Millar AA. Target RNA secondary structure is a major determinant of miR159 efficacy. *Plant Physiology* 2017; 174:1764-1778. DOI: 10.1104/pp.16.01898
- Zhuang A, Yap FY, Bruce C, Leung C, Plan MR, Sullivan MA et al. Increased liver AGEs induce hepatic injury mediated through an OST48 pathway. *Scientific Reports* 2017; 7:12292. DOI: 10.1038/s41598-017-12548-4

GARVAN INSTITUTE OF MEDICAL RESEARCH

384 Victoria Street,
Darlinghurst NSW, 2010
Australia
T + 61 2 9295 8100
F + 61 2 9295 8101
garvan.org.au

Garvan Institute of Medical Research
ABN: 62 330 391 937

Garvan Research Foundation
ABN: 91 042 722 738


Published April 2018


Copies of the Annual Report
can be obtained by contacting:

Garvan Research Foundation
foundation@garvan.org.au
+61 2 9295 8110


GARVAN SOCIAL

 [google.com/+garvaninstitute](https://plus.google.com/+garvaninstitute)

 facebook.com/garvaninstitute

 twitter.com/garvaninstitute

 youtube.com/garvaninstitute

 [linkedin.com/company/garvan-
institute-of-medical-research](https://linkedin.com/company/garvan-institute-of-medical-research)